

CONTOUR POST TABLE

Tables » Dining Height Tables



Collection: **Contour**

Designed by: **Botton + Gardiner**

CONTOUR POST TABLE

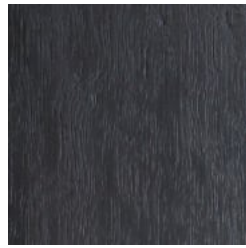
Tables » Dining Height Tables



Hardwood Blackbutt
UV-Resistant Oil



Hardwood Mixed Red
UV-Resistant Oil
Mahogany



Hardwood Mixed Red
UV-Resistant Oil
Ebony



Duraslat™ XG Ravine



Duraslat™ XG Cave



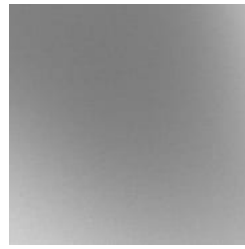
Duraslat™ XG Alcove



Duraslat™ XG
Boulder



Duraslat™ XG Dune



Galvanised Steel



Core Powder-Coat
White Satin



Core Powder-Coat
Black Satin



Core Powder-Coat
Charcoal Satin



Core Powder-Coat
Palladium Silver Satin



Core Powder-Coat
Matt Black Matt



Core Powder-Coat
Pearl White Gloss



Solid Powder-Coat
Coffee Satin



Solid Powder-Coat
Cove Satin



Solid Powder-Coat
Monument Matt



Solid Powder-Coat
Medium Bronze
Kinetic Flat



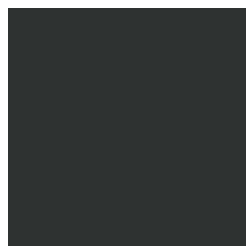
Textured Powder-
Coat Core Ten
Textured Metallic



Textured Powder-
Coat Asteroid
Textured Metallic



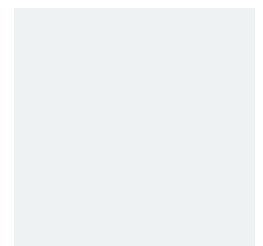
Textured Powder-
Coat Bass Textured
Metallic



Textured Powder-
Coat Textura Black



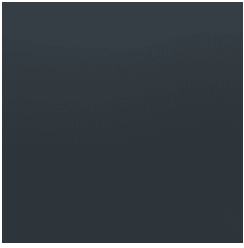
Textured Powder-
Coat Textura
Monument



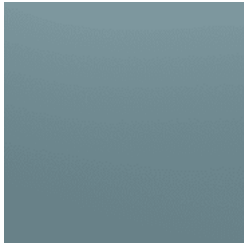
Textured Powder-
Coat Textura White

CONTOUR POST TABLE

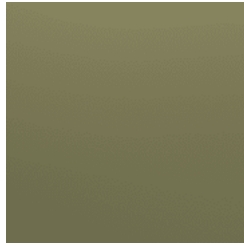
Tables » Dining Height Tables



Signature Powder-Coat Deep Ocean Satin



Signature Powder-Coat Wedgewood Satin



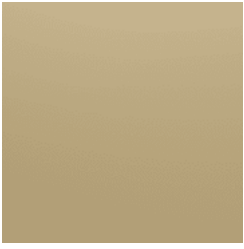
Signature Powder-Coat Mangrove Satin



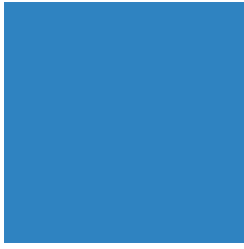
Signature Powder-Coat Territory Red Satin



Signature Powder-Coat Claypot Satin



Signature Powder-Coat Paperbark Satin



Bold Powder-Coat Bondi Blue Gloss



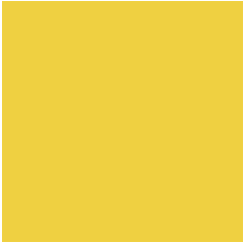
Bold Powder-Coat Leaf Satin



Bold Powder-Coat Sensation Gloss



Bold Powder-Coat Lobster Satin



Bold Powder-Coat Moonlight Satin



CONTOUR POST TABLE

Tables » Dining Height Tables

Accessible post table with rounded details. Hardwood or Duraslat™ XG battens with a cast aluminium frame in 27 powder-coat colours or satin finish.

Description With unifying, considered design details, the Contour bench forms part of the contemporary Contour range of commercial outdoor furniture to suit diverse needs and environments. Featuring fluid forms that reference soft, rounded, naturally occurring shapes, the Contour bench complements the collection of seating and table settings that can be arranged in multiple ways to create engaging public spaces. With finishes that include hard-wearing Blackbutt or Duraslat™ XG battens with a cast aluminium frame in 27 powder-coat colours or a satin finish, Contour is made to stand the test of time.

Made In Australia

Dimensions Hardwood
1800mmW x 730mmD x 860mmH

Duraslat™ XG
1800mmW x 725mmD x 850mmH

Batten Type Hardwood
Blackbutt - Rustic Gold, Mahogany, Ebony Oil

Duraslat™ XG
Ravine, Cave, Alcove, Boulder, Dune

Frame Cast aluminium in powder-coat or satin finish

Post: powder-coated galvanized steel, colour to match frame specification or silver to coordinate with the satin aluminum finish

CONTOUR POST TABLE

Tables » Dining Height Tables

Powder Coat

Core

White (satin), Black (satin), Charcoal (satin), Palladium Silver (satin), Matt Black (matt), Pearl White (gloss)

Solid

Coffee (satin), Cove (satin), Monument (matt), Medium Bronze Kinetic (flat)

Textured

Core Ten (textured metallic), Asteroid (textured metallic), Bass (textured metallic), Textura Black (textured), Textura Monument (textured), Textura White (textured)

Signature

Deep Ocean (satin), Wedgewood (satin), Mangrove (satin), Territory Red (matt), Claypot (satin), Paperbark (satin)

Bold

Bondi Blue (gloss), Leaf (satin), Sensation (gloss), Lobster (satin), Moonlight (satin)

Sustainability

Certified Hardwood

All hardwood is sourced from sustainable forests certified by the Program for the Endorsement of Forest Certification (PEFC), the world's largest forestry certification system.

Recycled Materials

We locally source our aluminium and steel. It means we know it uses recycled content and is 100% recyclable.

Duraslat™ XG is made from 90% of recycled hardwood fibres and reclaimed plastic materials, which reduces demand for virgin materials.

Low Pollutants

Our powder-coating process doesn't emit Volatile Organic Compounds (VOCs) and has Environmental Product Declarations (EPDs).

Warranty

5-year warranty. View the [warranty](#) for more details.

Lead Time

6-8 weeks

Assembly & Delivery

Shipped fully assembled on pallets.

Fixing Detail

Fixed only.

Surface fixed by others. Anchors not included.

CONTOUR POST TABLE

Tables » Dining Height Tables

How to Specify

- Select your batten finish
- Select your frame finish
- Select your fixing type

Care Instructions

Hardwood

Cleaning

Remove any loose surface deposits with a soft bristled brush and wipe down with fresh water and a non-abrasive cloth.

Oiling

Oiling of timber will postpone natural greying, repel moisture, improve mould resistance, help maintain a smooth surface texture and enhance the grain and colour.

To maintain, lightly sand rough areas of timber and brush on one coat of timber decking oil every 6 months or as required.

Duraslat™ XG

Cleaning

Simply wash down occasionally. Do not use high pressure cleaners.

Powder-Coat

Cleaning

Carefully remove any loose surface deposits with a wet sponge or soft bristled brush.

Use a soft (non-abrasive) cloth or brush and a diluted solution of mild detergent and warm water.

Ensure surfaces are thoroughly rinsed with clean fresh water after cleaning to remove all residues.

Never use thinners, abrasive cleaning agents, alcohol-based, acid or alkali cleaning agents.

Customisable

As this item is made to order locally, custom lengths are available on request.

Additional Comments

Hardwood is treated with a UV-resistant oil finish.

Considered design details include concealed fixings and integrated anchor points for clean lines.
