

# CONTOUR TRANSVERSE BENCH

Seating » Benches



Collection: **Contour**

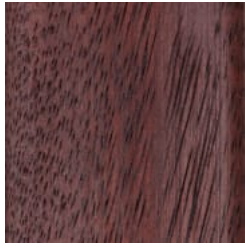
Designed by: **Botton + Gardiner**

# CONTOUR TRANSVERSE BENCH

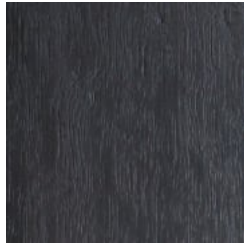
Seating » Benches



Hardwood Blackbutt  
UV-Resistant Oil



Hardwood Mixed Red  
UV-Resistant Oil  
Mahogany



Hardwood Mixed Red  
UV-Resistant Oil  
Ebony



Duraslat™ XG Ravine



Duraslat™ XG Cave



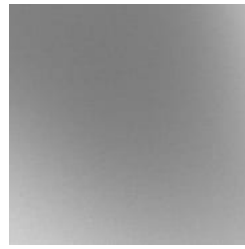
Duraslat™ XG Alcove



Duraslat™ XG  
Boulder



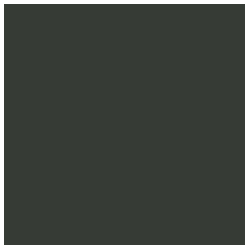
Duraslat™ XG Dune



Galvanised Steel



Core Powder-Coat  
White Satin



Core Powder-Coat  
Black Satin



Core Powder-Coat  
Charcoal Satin



Core Powder-Coat  
Palladium Silver Satin



Core Powder-Coat  
Matt Black Matt



Core Powder-Coat  
Pearl White Gloss



Solid Powder-Coat  
Coffee Satin



Solid Powder-Coat  
Cove Satin



Solid Powder-Coat  
Monument Matt



Solid Powder-Coat  
Medium Bronze  
Kinetic Flat



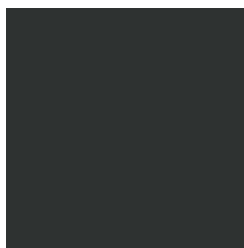
Textured Powder-  
Coat Core Ten  
Textured Metallic



Textured Powder-  
Coat Asteroid  
Textured Metallic



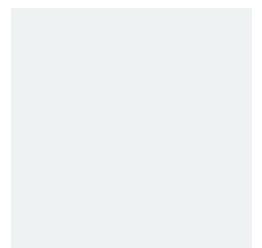
Textured Powder-  
Coat Bass Textured  
Metallic



Textured Powder-  
Coat Textura Black



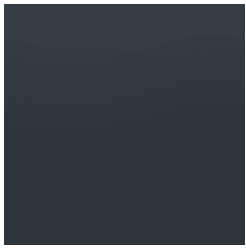
Textured Powder-  
Coat Textura  
Monument



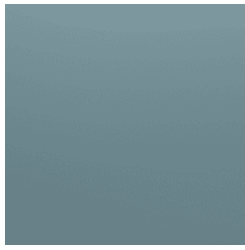
Textured Powder-  
Coat Textura White

# CONTOUR TRANSVERSE BENCH

Seating » Benches



Signature Powder-Coat Deep Ocean Satin



Signature Powder-Coat Wedgewood Satin



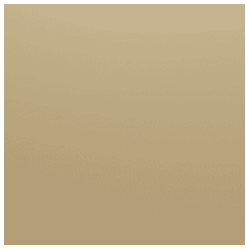
Signature Powder-Coat Mangrove Satin



Signature Powder-Coat Territory Red Satin



Signature Powder-Coat Claypot Satin



Signature Powder-Coat Paperbark Satin



Bold Powder-Coat Bondi Blue Gloss



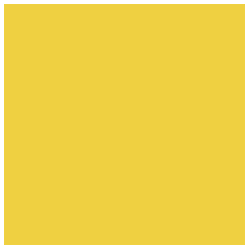
Bold Powder-Coat Leaf Satin



Bold Powder-Coat Sensation Gloss



Bold Powder-Coat Lobster Satin



Bold Powder-Coat Moonlight Satin





# CONTOUR TRANSVERSE BENCH

Seating » Benches

---

Contemporary transverse bench with rounded details. Hardwood, Duraslat XG battens with cast aluminium frame in 27 powder-coat colours or satin finish.

---

**Description** With unifying, considered design details, the Contour transverse bench forms part of the contemporary Contour range of commercial outdoor furniture to suit diverse needs and environments. Featuring fluid forms that reference soft, rounded, naturally occurring shapes, the Contour transverse bench complements the collection of seating and table settings that can be arranged in multiple ways to create engaging public spaces. With finishes that include hard-wearing Blackbutt or Duraslat™ XG battens with a cast aluminium frame in 27 powder-coat colours or a satin finish, Contour is made to stand the test of time.

---

**Made In** Australia

---

**Dimensions** Hardwood  
1800mmW x 430mmD x 450mmH  
  
Duraslat™ XG  
1600mmW x 430mmD x 450mmH

---

**Batten Type** Hardwood  
Blackbutt - Rustic Gold, Mahogany, Ebony Oil  
  
Duraslat™ XG  
Ravine, Cave, Alcove, Boulder, Dune

---

**Frame** Cast aluminium in powder-coat or satin finish on external faces + wire-brushed finish on the inside to expose the stippled sand cast finish.

---

# CONTOUR TRANSVERSE BENCH

Seating » Benches

---

## Powder Coat

### Core

White (satin), Black (satin), Charcoal (satin), Palladium Silver (satin), Matt Black (matt), Pearl White (gloss)

### Solid

Coffee (satin), Cove (satin), Monument (matt), Medium Bronze Kinetic (flat)

### Textured

Core Ten (textured metallic), Asteroid (textured metallic), Bass (textured metallic), Textura Black (textured), Textura Monument (textured), Textura White (textured)

### Signature

Deep Ocean (satin), Wedgewood (satin), Mangrove (satin), Territory Red (matt), Claypot (satin), Paperbark (satin)

### Bold

Bondi Blue (gloss), Leaf (satin), Sensation (gloss), Lobster (satin), Moonlight (satin)

---

## Sustainability

### Certified Hardwood

All hardwood is sourced from sustainable forests certified by the Program for the Endorsement of Forest Certification (PEFC), the world's largest forestry certification system.

### Recycled Materials

We locally source our aluminium and steel. It means we know it uses recycled content and is 100% recyclable.

Duraslat™ XG is made from 90% of recycled hardwood fibres and reclaimed plastic materials, which reduces demand for virgin materials.

### Low Pollutants

Our powder-coating process doesn't emit Volatile Organic Compounds (VOCs) and has Environmental Product Declarations (EPDs).

---

## Warranty

5-year warranty. View the [warranty](#) for more details.

---

## Lead Time

6-8 weeks

---

## Assembly & Delivery

Shipped fully assembled on pallets.

---

## Fixing Detail

Surface or sub-surface fixed by others. Anchors not included. Shims available for sub-surface fixing on request.

---

# CONTOUR TRANSVERSE BENCH

Seating » Benches

---

## How to Specify

Select your length  
Select your batten finish  
Select your frame finish  
Select your fixing type

---

# CONTOUR TRANSVERSE BENCH

Seating » Benches

---

## Care Instructions

### Hardwood

#### Cleaning

Remove any loose surface deposits with a soft bristled brush and wipe down with fresh water and a non-abrasive cloth.

#### Oiling

Oiling of timber will postpone natural greying, repel moisture, improve mould resistance, help maintain a smooth surface texture and enhance the grain and colour.

To maintain, lightly sand rough areas of timber and brush on one coat of timber decking oil every 6 months or as required.

### Duraslat™ XG

#### Cleaning

Simply wash down occasionally. Do not use high pressure cleaners.

### Powder-Coat

#### Cleaning

Carefully remove any loose surface deposits with a wet sponge or soft bristled brush.

Use a soft (non-abrasive) cloth or brush and a diluted solution of mild detergent and warm water.

Ensure surfaces are thoroughly rinsed with clean fresh water after cleaning to remove all residues.

Never use thinners, abrasive cleaning agents, alcohol-based, acid or alkali cleaning agents.

### Hot-Dip Galvanised Steel

For general cleaning of bulk contaminants such as dirt and the like, ordinary laundry soaps can be satisfactorily used.

For more stubborn or larger areas, the use of a low-pressure wash (eg. a gurney gun) with just pure water or in conjunction with proprietary cleaning materials, such as car wash or truck wash, can be effective. It is important that the steel be washed down with fresh water after cleaning.

The cleaning treatment of the galvanising should be conservative at first and then if the situation demands, the treatment can become steadily more aggressive. Also, wherever some form of mechanical abrasion or “scrubbing” is required, the use of a hard, plastic bristle brush is recommended. Steel bristle brushes are not to be used since they will cause discolouration.

Mechanical methods of cleaning zinc surfaces can cause aesthetic issues. The “cleaned” areas are likely to contrast with adjacent untreated surfaces and may take a significant period of time to weather to a uniform colour. If aesthetics is a large concern, it is advisable to first test the cleaning method in an inconspicuous area in case the aesthetic effect is unappealing.

# CONTOUR TRANSVERSE BENCH

Seating » Benches

---

**Customisable** As this item is made to order locally, custom lengths are available on request.

---

**Additional Comments** Hardwood is treated with a UV-resistant oil finish.  
As this item is made to order locally, custom lengths are available on request.

---