

FORUM LOUNGE

Seating » Lounges



Designed by: **Botton + Gardiner**

FORUM LOUNGE

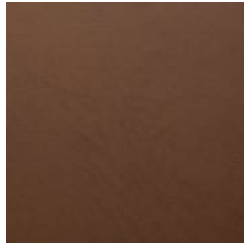
Seating » Lounges



Baresque Chamois
Upholstery Fabric
Espresso



Baresque Chamois
Upholstery Fabric
Truffle



Baresque Chamois
Upholstery Fabric
Mahogany



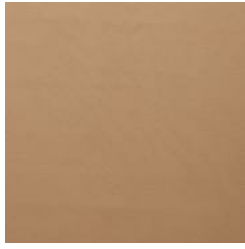
Baresque Chamois
Upholstery Fabric
Cappuccino



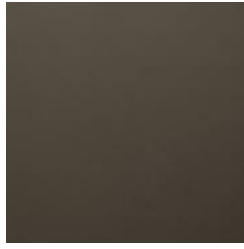
Baresque Chamois
Upholstery Fabric
Cognac



Baresque Chamois
Upholstery Fabric
Luggage



Baresque Chamois
Upholstery Fabric
Camel



Baresque Chamois
Upholstery Fabric
Storm



Baresque Chamois
Upholstery Fabric
Antelope



Baresque Chamois
Upholstery Fabric
Elephant



Baresque Chamois
Upholstery Fabric
Cashew



Baresque Chamois
Upholstery Fabric
Fawn



Baresque Chamois
Upholstery Fabric
Bone



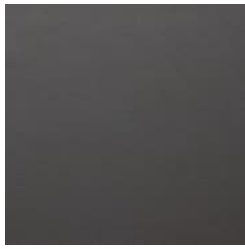
Baresque Chamois
Upholstery Fabric
Fog



Baresque Chamois
Upholstery Fabric
Pewter



Baresque Chamois
Upholstery Fabric
Patina



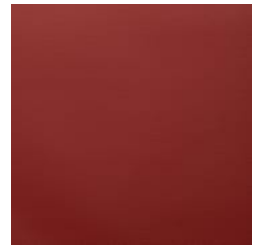
Baresque Chamois
Upholstery Fabric
Charcoal



Baresque Chamois
Upholstery Fabric
Cinnamon



Baresque Chamois
Upholstery Fabric
Bordeaux



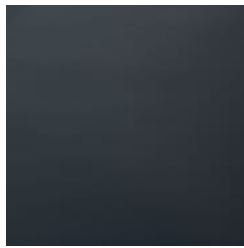
Baresque Chamois
Upholstery Fabric
Salsa



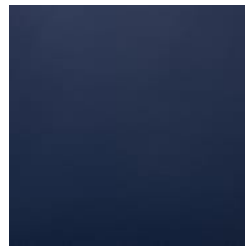
Baresque Chamois



Baresque Chamois



Baresque Chamois



Baresque Chamois

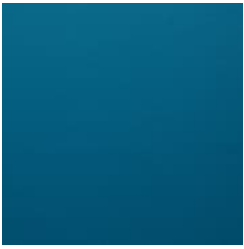


Baresque Chamois

FORUM LOUNGE

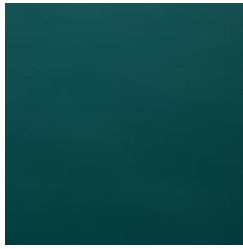
Seating » Lounges

Upholstery Fabric
Molten



Baresque Chamois
Upholstery Fabric
Paradise

Upholstery Fabric
Black



Baresque Chamois
Upholstery Fabric
Mallard

Upholstery Fabric
Navy



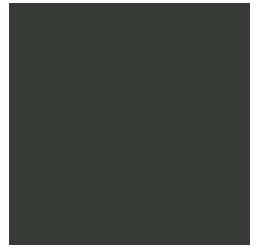
Baresque Chamois
Upholstery Fabric
Sassafrass

Upholstery Fabric
Indigo



Core Powder-Coat
White Satin

Upholstery Fabric
Cerulean



Core Powder-Coat
Black Satin



Core Powder-Coat
Charcoal Satin



Core Powder-Coat
Palladium Silver Satin



Core Powder-Coat
Matt Black Matt



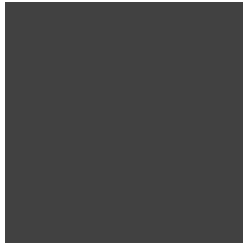
Core Powder-Coat
Pearl White Gloss



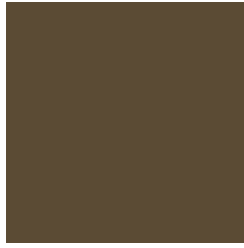
Solid Powder-Coat
Coffee Satin



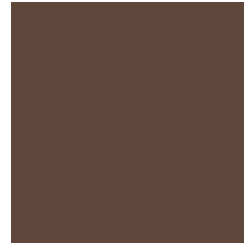
Solid Powder-Coat
Cove Satin



Solid Powder-Coat
Monument Matt



Solid Powder-Coat
Medium Bronze
Kinetic Flat



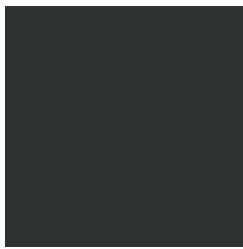
Textured Powder-
Coat Core Ten
Textured Metallic



Textured Powder-
Coat Asteroid
Textured Metallic



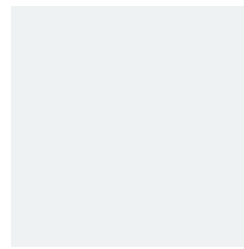
Textured Powder-
Coat Bass Textured
Metallic



Textured Powder-
Coat Textura Black



Textured Powder-
Coat Textura
Monument



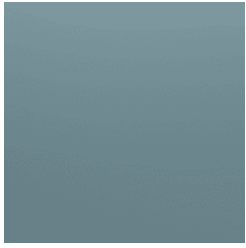
Textured Powder-
Coat Textura White



Signature Powder-
Coat Deep Ocean
Satin

FORUM LOUNGE

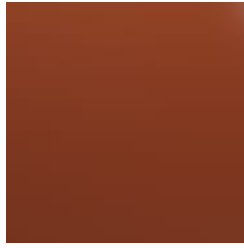
Seating » Lounges



Signature Powder-Coat Wedgewood Satin



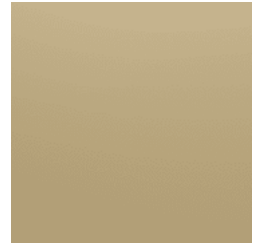
Signature Powder-Coat Mangrove Satin



Signature Powder-Coat Territory Red Satin



Signature Powder-Coat Claypot Satin



Signature Powder-Coat Paperbark Satin



Bold Powder-Coat Bondi Blue Gloss



Bold Powder-Coat Leaf Satin



Bold Powder-Coat Sensation Gloss



Bold Powder-Coat Lobster Satin



Bold Powder-Coat Moonlight Satin



FORUM LOUNGE

Seating » Lounges

Modern lounge seating design. Mix and match upholstery fabrics with a powder-coated or satin steel frame to suit many commercial interior spaces.

Description	Forum is one of the quintessential mall pieces. Ideal for high-traffic locations where risk of trolley impact is high, the boxy steel frame protects and reduces upholstery impact whilst giving the Forum lounge its industrial aesthetic. Optional armrests are available that helps with ease of accessibility.
Made In	Australia
Dimensions	1 seater: 1100mmW x 770mmD x 700mmH 2 seater: 1700mmW x 770mmD x 700mmH 3 seater: 2200mmW x 770mmD x 700mmH Seat height: 420mm
Frame	Powder-coated or satin steel
Powder Coat	Core White (satin), Black (satin), Charcoal (satin), Palladium Silver (satin), Matt Black (matt), Pearl White (gloss) Solid Coffee (satin), Cove (satin), Monument (matt), Medium Bronze Kinetic (flat) Textured Core Ten (textured metallic), Asteroid (textured metallic), Bass (textured metallic), Textura Black (textured), Textura Monument (textured), Textura White (textured) Signature Deep Ocean (satin), Wedgewood (satin), Mangrove (satin), Territory Red (matt), Claypot (satin), Paperbark (satin) Bold Bondi Blue (gloss), Leaf (satin), Sensation (gloss), Lobster (satin), Moonlight (satin)

FORUM LOUNGE

Seating » Lounges

Fabric Amount Required

Based on one plain fabric 137cm wide:

Single Sided

3-Seater 1800mmW: 3.6m

4-Seater 2400mmW: 4.8m

Double Sided

6-Seater 1800mmW: 5.4m

8-seater 2400mmW: 7.2m

Finishes

Upholstery Fabrics

Specify a [Baresque upholstery fabric](#) or supply your own to be approved by us to ensure it is fit for purpose.

Baresque

Chamois: Espresso, Truffle, Mahogany, Cappuccino, Cognac, Luggage, Camel, Storm, Antelope, Elephant, Cashew, Fawn, Bone, Fog, Pewter, Patina, Charcoal, Cinnamon, Bordeaux, Salsa, Molten, Black, Navy, Indigo, Cerulean, Paradise, Mallard, Sassafrass

The steel frame is available in a powder-coat or satin finish.

A wider selection of materials + finishes is available.

Sustainability

Certified Hardwood

All hardwood is sourced from sustainable forests certified by the Program for the Endorsement of Forest Certification (PEFC), the world's largest forestry certification system.

Recycled Materials

We locally source our steel. It means we know it uses recycled content and is 100% recyclable.

Low Pollutants

Our powder-coating process doesn't emit Volatile Organic Compounds (VOCs) and has Environmental Product Declarations (EPDs).

Warranty

2-year warranty. View the [warranty](#) for more details.

Lead Time

6-8 weeks

Assembly & Delivery

Shipped fully assembled on pallets.

Fixing Detail

Supplied with glides for loose use as standard. Optional fixing tabs can be added if you require this item fixed for security.

FORUM LOUNGE

Seating » Lounges

How to Specify

Select single or double sided design
Select with or without arms
Select your length
Select your frame finish
Select your fabric
Select your fixing type

Care Instructions

Baresque Upholstery Fabrics

Use a cloth with any of the following in preferred order of use:

1. Clear warm water
2. Mild solution of liquid detergent and warm water
3. Isopropyl Alcohol (rubbing alcohol)

Remove any detergent with a clean, damp cloth. Gently pat dry.

For more difficult stains, dampen a soft white cloth with a solution of household bleach (mix 10% bleach with 90% water). Rub gently. Rinse with a water dampened cloth to remove bleach concentration.

Do not use solvent based or concentrated abrasive cleaning agents, lacquer thinners or nail polish remover as these may cause discolouration over a period of time.

Always test in an inconspicuous area first.

Additional Comments

Optional armrests for ease of accessibility.
