

PIPE OTTOMAN

Seating » Ottomans



Designed by: **Botton + Gardiner**

PIPE OTTOMAN

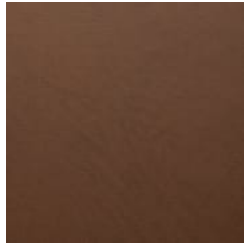
Seating » Ottomans



Baresque Chamois
Upholstery Fabric
Espresso



Baresque Chamois
Upholstery Fabric
Truffle



Baresque Chamois
Upholstery Fabric
Mahogany



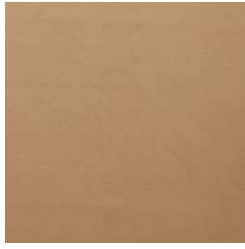
Baresque Chamois
Upholstery Fabric
Cappuccino



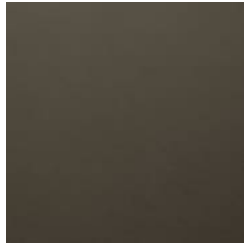
Baresque Chamois
Upholstery Fabric
Cognac



Baresque Chamois
Upholstery Fabric
Luggage



Baresque Chamois
Upholstery Fabric
Camel



Baresque Chamois
Upholstery Fabric
Storm



Baresque Chamois
Upholstery Fabric
Antelope



Baresque Chamois
Upholstery Fabric
Elephant



Baresque Chamois
Upholstery Fabric
Cashew



Baresque Chamois
Upholstery Fabric
Fawn



Baresque Chamois
Upholstery Fabric
Bone



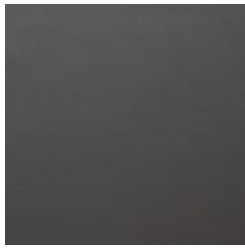
Baresque Chamois
Upholstery Fabric
Fog



Baresque Chamois
Upholstery Fabric
Pewter



Baresque Chamois
Upholstery Fabric
Patina



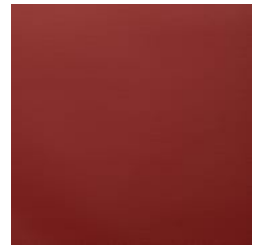
Baresque Chamois
Upholstery Fabric
Charcoal



Baresque Chamois
Upholstery Fabric
Cinnamon



Baresque Chamois
Upholstery Fabric
Bordeaux



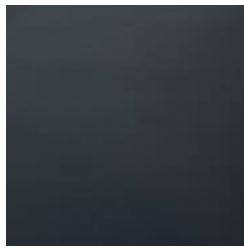
Baresque Chamois
Upholstery Fabric
Salsa



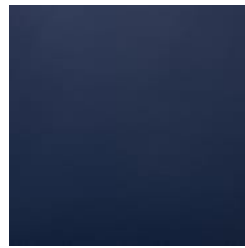
Baresque Chamois



Baresque Chamois



Baresque Chamois



Baresque Chamois

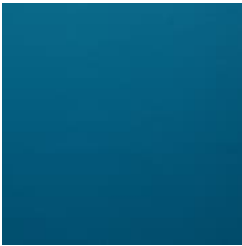


Baresque Chamois

PIPE OTTOMAN

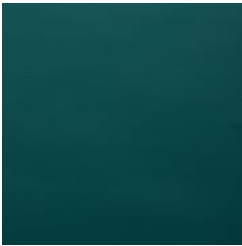
Seating » Ottomans

Upholstery Fabric
Molten



Baresque Chamois
Upholstery Fabric
Paradise

Upholstery Fabric
Black



Baresque Chamois
Upholstery Fabric
Mallard

Upholstery Fabric
Navy



Baresque Chamois
Upholstery Fabric
Sassafrass

Upholstery Fabric
Indigo



Upholstery Fabric
Cerulean



PIPE OTTOMAN

Seating » Ottomans

Modern, cylindrical ottoman seating design. Mix and match upholstery fabrics to suit many commercial interior spaces.

Description	Pipe is a simple cylindrical ottoman with piped detailing around the top rim. Easily mobile for agile workspaces or educational hubs, the Pipe ottoman provides extra seating in pod settings with lounges, coffee or side tables. With a wide selection of upholstered fabrics to choose from, Pipe can be tailored to suit many commercial interior spaces.
Made In	Australia
Dimensions	Small: 350 DIA x 450mmH Large: 750 DIA x 450mmH
Fabric Amount Required	Based on one plain fabric 137cm wide: Small: single colour 1.3m (+ 0.5m for optional contrast piping) Large: single colour 2.6m (+ 0.5m for optional contrast piping)
Finishes	<u>Upholstery Fabrics</u> Specify a <u>Baresque upholstery fabric</u> or supply your own to be approved by us to ensure it is fit for purpose. <u>Baresque</u> <u>Chamois</u> : Espresso, Truffle, Mahogany, Cappuccino, Cognac, Luggage, Camel, Storm, Antelope, Elephant, Cashew, Fawn, Bone, Fog, Pewter, Patina, Charcoal, Cinnamon, Bordeaux, Salsa, Molten, Black, Navy, Indigo, Cerulean, Paradise, Mallard, Sassafrass A wider selection of materials + finishes is available.
Warranty	2-year warranty. View the <u>warranty</u> for more details.
Lead Time	4-6 weeks
Assembly & Delivery	Shipped fully assembled on pallets.
Fixing Detail	Freestanding.
How to Specify	Select your size Decide if you want contrast piping Select your fabric

PIPE OTTOMAN

Seating » Ottomans

Care Instructions

Baresque Upholstery Fabrics

Use a cloth with any of the following in preferred order of use:

1. Clear warm water
2. Mild solution of liquid detergent and warm water
3. Isopropyl Alcohol (rubbing alcohol)

Remove any detergent with a clean, damp cloth. Gently pat dry.

For more difficult stains, dampen a soft white cloth with a solution of household bleach (mix 10% bleach with 90% water). Rub gently. Rinse with a water dampened cloth to remove bleach concentration.

Do not use solvent based or concentrated abrasive cleaning agents, lacquer thinners or nail polish remover as these may cause discolouration over a period of time.

Always test in an inconspicuous area first.

Customisable

Do the piping in a contrast colour or keep it monotone.

This item is made locally, so we have wide flexibility in manufacturing to tailor the Pipe ottoman to suit your project specifications with a short lead time.
