

ALFRESCO BAR TABLE

Tables » Bar Height Tables

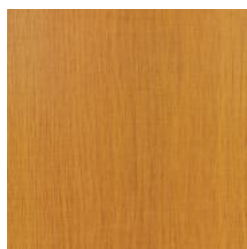


Collection: **Alfresco**

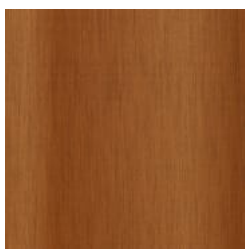
Designed by: **Botton + Gardiner**

ALFRESCO BAR TABLE

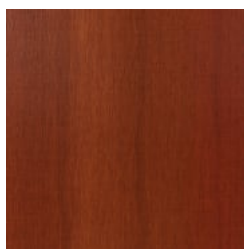
Tables » Bar Height Tables



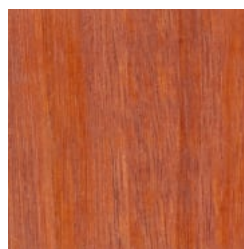
Hardwood Blackbutt
UV-Resistant Oil



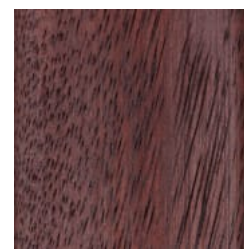
Hardwood Spotted
Gum UV-Resistant
Oil



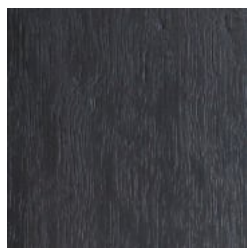
Hardwood Merbau
UV-Resistant Oil



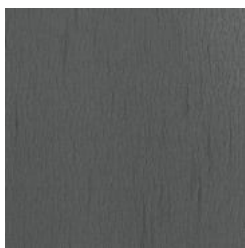
Hardwood Mixed Red
UV-Resistant Oil
Clear



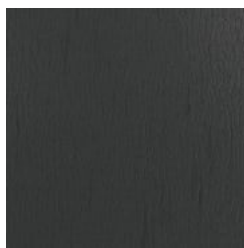
Hardwood Mixed Red
UV-Resistant Oil
Mahogany



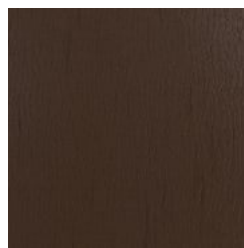
Hardwood Mixed Red
UV-Resistant Oil
Ebony



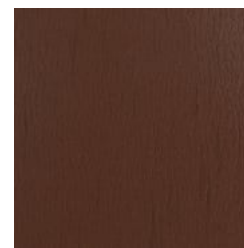
Duraslat™ XG Ravine



Duraslat™ XG Cave



Duraslat™ XG Alcove



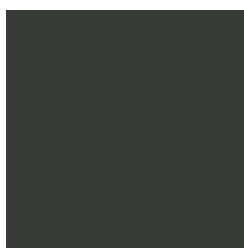
Duraslat™ XG
Boulder



Duraslat™ XG Dune



Core Powder-Coat
White Satin



Core Powder-Coat
Black Satin



Core Powder-Coat
Charcoal Satin



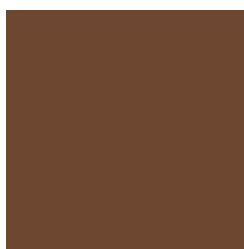
Core Powder-Coat
Palladium Silver Satin



Core Powder-Coat
Matt Black Matt



Core Powder-Coat
Pearl White Gloss



Solid Powder-Coat
Coffee Satin



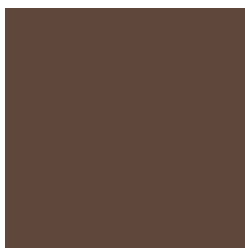
Solid Powder-Coat
Cove Satin



Solid Powder-Coat
Monument Matt



Solid Powder-Coat
Medium Bronze
Kinetic Flat



Textured Powder-
Coat Core Ten
Textured Metallic



Textured Powder-
Coat Asteroid
Textured Metallic



Textured Powder-
Coat Bass Textured
Metallic



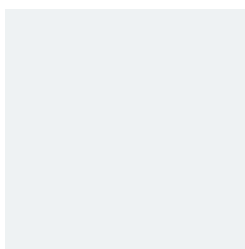
Textured Powder-
Coat Textura Black

ALFRESCO BAR TABLE

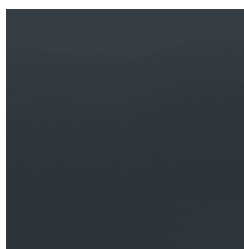
Tables » Bar Height Tables



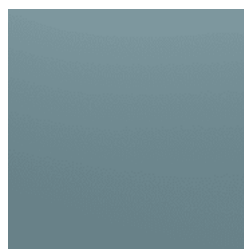
Textured Powder-Coat Textura Monument



Textured Powder-Coat Textura White



Signature Powder-Coat Deep Ocean Satin



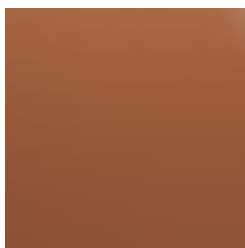
Signature Powder-Coat Wedgewood Satin



Signature Powder-Coat Mangrove Satin



Signature Powder-Coat Territory Red Satin



Signature Powder-Coat Claypot Satin



Signature Powder-Coat Paperbark Satin



Bold Powder-Coat Bondi Blue Gloss



Bold Powder-Coat Leaf Satin



Bold Powder-Coat Sensation Gloss



Bold Powder-Coat Lobster Satin



Bold Powder-Coat Moonlight Satin



ALFRESCO BAR TABLE

Tables » Bar Height Tables

Contemporary bar height table. Light in scale. Hardwood, Duraslat™ battens or slotted compact laminate with a slim-line steel frame.

Description	Slim-line steel framing together with linear battens or slotted compact laminate provide the Alfresco bar table with a contemporary aesthetic that is light in scale. Battens in hardwood or Duraslat™. Frame finishes include satin polished steel or 27 powder-coat colours. As its name implies, Alfresco is suited to outdoor communal dining, ideal for educational or corporate campuses, bars, cafes, and restaurants.
Made In	Australia
Dimensions	1800mmW x 940mmD x 1050mmH As this item is made to order locally, custom sizing is available.
Batten Type	Hardwood Blackbutt, Spotted Gum, Mixed Red - Pine, Mahogany, Ebony Oil Duraslat™ XG Ravine, Cave, Alcove, Boulder, Dune
Frame	Satin polished or powder-coated steel
Powder Coat	Core White (satin), Black (satin), Charcoal (satin), Palladium Silver (satin), Matt Black (matt), Pearl White (gloss) Solid Coffee (satin), Cove (satin), Monument (matt), Medium Bronze Kinetic (flat) Textured Core Ten (textured metallic), Asteroid (textured metallic), Bass (textured metallic), Textura Black (textured), Textura Monument (textured), Textura White (textured) Signature Deep Ocean (satin), Wedgewood (satin), Mangrove (satin), Territory Red (matt), Claypot (satin), Paperbark (satin) Bold Bondi Blue (gloss), Leaf (satin), Sensation (gloss), Lobster (satin), Moonlight (satin)

ALFRESCO BAR TABLE

Tables » Bar Height Tables

Sustainability

Certified Hardwood

All hardwood is sourced from sustainable forests certified by the Program for the Endorsement of Forest Certification (PEFC), the world's largest forestry certification system.

Recycled Materials

We locally source our steel. It means we know it uses recycled content and is 100% recyclable.

Duraslat™ XG is made from 90% of recycled hardwood fibres and reclaimed plastic materials, which reduces demand for virgin materials.

Low Pollutants

Our powder-coating process doesn't emit Volatile Organic Compounds (VOCs) and has Environmental Product Declarations (EPDs).

Warranty

2-year warranty. View the [warranty](#) for more details.

Lead Time

6-8 weeks

Assembly & Delivery

Shipped fully assembled on pallets.

Fixing Detail

Supplied with glides for loose use as standard. Optional fixing tabs can be added if you require this item fixed for security.

How to Specify

Select the standard size or specify your length, depth and height
Select your top finish
Select your frame finish
Select your fixing type

ALFRESCO BAR TABLE

Tables » Bar Height Tables

Care Instructions

Hardwood

Cleaning

Remove any loose surface deposits with a soft bristled brush and wipe down with fresh water and a non-abrasive cloth.

Oiling

Oiling of timber will postpone natural greying, repel moisture, improve mould resistance, help maintain a smooth surface texture and enhance the grain and colour.

To maintain, lightly sand rough areas of timber and brush on one coat of timber decking oil every 6 months or as required.

Duraslat™ XG

Cleaning

Simply wash down occasionally. Do not use high pressure cleaners.

Powder-Coat

Cleaning

Carefully remove any loose surface deposits with a wet sponge or soft bristled brush.

Use a soft (non-abrasive) cloth or brush and a diluted solution of mild detergent and warm water.

Ensure surfaces are thoroughly rinsed with clean fresh water after cleaning to remove all residues.

Never use thinners, abrasive cleaning agents, alcohol-based, acid or alkali cleaning agents.

Customisable

As this item is made to order locally, custom sizing is available and the top finish can be custom specified finishes such as - laminates, stone, Stratek 3D laminate, granite, Lightblocks, tiled and much more, please contact us for information.

Additional Comments

Hardwood is treated with a UV-resistant oil finish.
