

CUBIX ARMCHAIR

Seating » Armchairs



Designed by: **Botton + Gardiner**

CUBIX ARMCHAIR

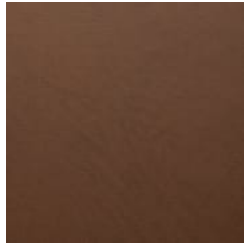
Seating » Armchairs



Baresque Chamois
Upholstery Fabric
Espresso



Baresque Chamois
Upholstery Fabric
Truffle



Baresque Chamois
Upholstery Fabric
Mahogany



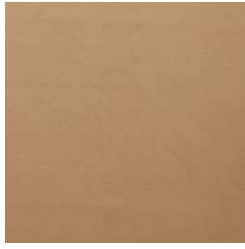
Baresque Chamois
Upholstery Fabric
Cappuccino



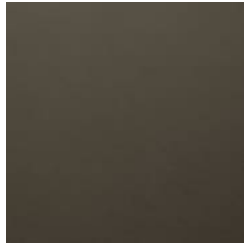
Baresque Chamois
Upholstery Fabric
Cognac



Baresque Chamois
Upholstery Fabric
Luggage



Baresque Chamois
Upholstery Fabric
Camel



Baresque Chamois
Upholstery Fabric
Storm



Baresque Chamois
Upholstery Fabric
Antelope



Baresque Chamois
Upholstery Fabric
Elephant



Baresque Chamois
Upholstery Fabric
Cashew



Baresque Chamois
Upholstery Fabric
Fawn



Baresque Chamois
Upholstery Fabric
Bone



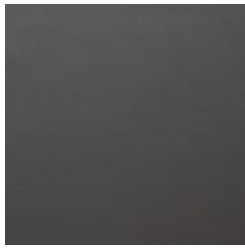
Baresque Chamois
Upholstery Fabric
Fog



Baresque Chamois
Upholstery Fabric
Pewter



Baresque Chamois
Upholstery Fabric
Patina



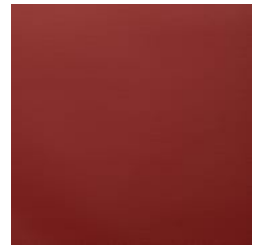
Baresque Chamois
Upholstery Fabric
Charcoal



Baresque Chamois
Upholstery Fabric
Cinnamon



Baresque Chamois
Upholstery Fabric
Bordeaux



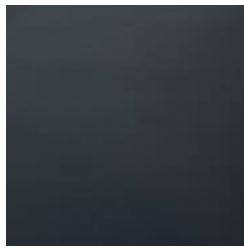
Baresque Chamois
Upholstery Fabric
Salsa



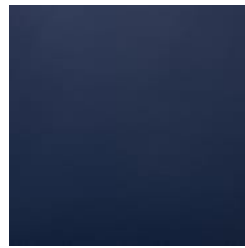
Baresque Chamois



Baresque Chamois



Baresque Chamois



Baresque Chamois

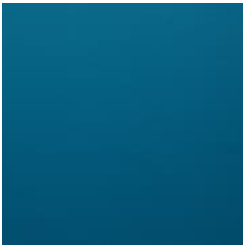


Baresque Chamois

CUBIX ARMCHAIR

Seating » Armchairs

Upholstery Fabric
Molten



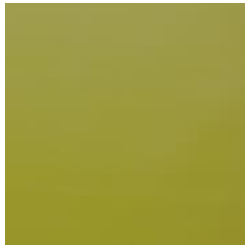
Baresque Chamois
Upholstery Fabric
Paradise

Upholstery Fabric
Black



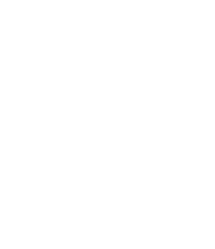
Baresque Chamois
Upholstery Fabric
Mallard

Upholstery Fabric
Navy



Baresque Chamois
Upholstery Fabric
Sassafrass

Upholstery Fabric
Indigo

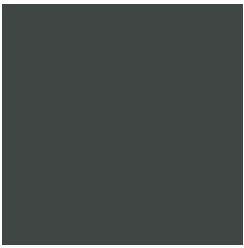


Core Powder-Coat
White Satin

Upholstery Fabric
Cerulean



Core Powder-Coat
Black Satin



Core Powder-Coat
Charcoal Satin



Core Powder-Coat
Palladium Silver Satin



Core Powder-Coat
Matt Black Matt



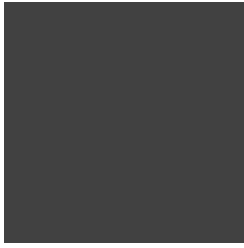
Core Powder-Coat
Pearl White Gloss



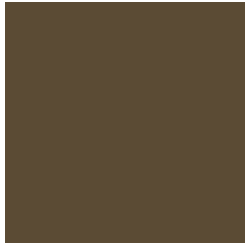
Solid Powder-Coat
Coffee Satin



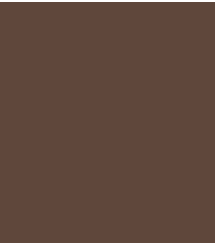
Solid Powder-Coat
Cove Satin



Solid Powder-Coat
Monument Matt



Solid Powder-Coat
Medium Bronze
Kinetic Flat



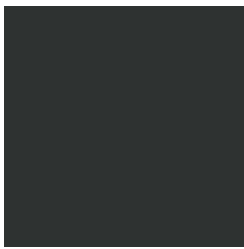
Textured Powder-
Coat Core Ten
Textured Metallic



Textured Powder-
Coat Asteroid
Textured Metallic



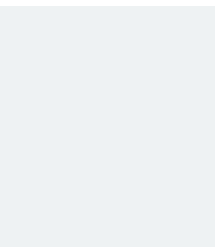
Textured Powder-
Coat Bass Textured
Metallic



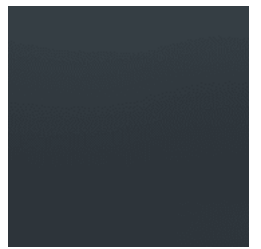
Textured Powder-
Coat Textura Black



Textured Powder-
Coat Textura
Monument



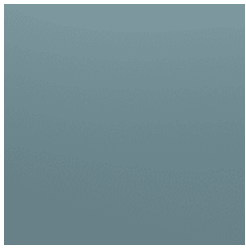
Textured Powder-
Coat Textura White



Signature Powder-
Coat Deep Ocean
Satin

CUBIX ARMCHAIR

Seating » Armchairs



Signature Powder-Coat Wedgewood Satin



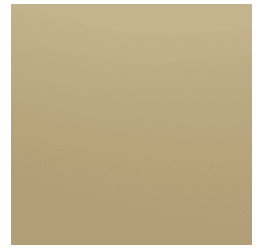
Signature Powder-Coat Mangrove Satin



Signature Powder-Coat Territory Red Satin



Signature Powder-Coat Claypot Satin



Signature Powder-Coat Paperbark Satin



Bold Powder-Coat Bondi Blue Gloss



Bold Powder-Coat Leaf Satin



Bold Powder-Coat Sensation Gloss



Bold Powder-Coat Lobster Satin



Bold Powder-Coat Moonlight Satin



CUBIX ARMCHAIR

Seating » Armchairs

Contemporary armchair design. Mix and match upholstery fabrics with powder-coated steel or hardwood legs to suit many commercial interior spaces.

Description Featuring sleek, contemporary geometry, the Cubix armchair is equally at home in a trendy loft bar, upmarket hotel or shopping centre. With clean lines, Cubix is highly versatile by being able to marry seamlessly with any pod setting or style. Available in an extensive range of hard-wearing materials, finishes and colours, Cubix can be customised to suit your next interior project.

Made In Australia

Dimensions 730mmW x 830mmD x 720mmH
Seat height 430mm
Arm height 500mm

Frame Powder-coated steel

Powder Coat Core
White (satin), Black (satin), Charcoal (satin), Palladium Silver (satin), Matt Black (matt), Pearl White (gloss)

 Solid
Coffee (satin), Cove (satin), Monument (matt), Medium Bronze Kinetic (flat)

 Textured
Core Ten (textured metallic), Asteroid (textured metallic), Bass (textured metallic), Textura Black (textured), Textura Monument (textured), Textura White (textured)

 Signature
Deep Ocean (satin), Wedgewood (satin), Mangrove (satin), Territory Red (matt), Claypot (satin), Paperbark (satin)

 Bold
Bondi Blue (gloss), Leaf (satin), Sensation (gloss), Lobster (satin), Moonlight (satin)

Fabric Amount Required 2.5m - based on one plain fabric 137cm wide.

CUBIX ARMCHAIR

Seating » Armchairs

Finishes

Upholstery Fabrics

Specify a [Baresque upholstery fabric](#) or supply your own to be approved by us to ensure it is fit for purpose.

[Baresque](#)

[Chamois](#): Espresso, Truffle, Mahogany, Cappuccino, Cognac, Luggage, Camel, Storm, Antelope, Elephant, Cashew, Fawn, Bone, Fog, Pewter, Patina, Charcoal, Cinnamon, Bordeaux, Salsa, Molten, Black, Navy, Indigo, Cerulean, Paradise, Mallard, Sassafrass

A wider selection of materials + finishes is available.

Sustainability

Recycled Materials

We locally source our steel. It means we know it uses recycled content and is 100% recyclable.

Low Pollutants

Our powder-coating process doesn't emit Volatile Organic Compounds (VOCs) and has Environmental Product Declarations (EPDs).

Warranty

2-year warranty. View the [warranty](#) for more details.

Lead Time

6-8 weeks

Assembly & Delivery

Shipped fully assembled on pallets.

Fixing Detail

Freestanding only - loose on glides.

How to Specify

Select your frame finish
Select your fabric

CUBIX ARMCHAIR

Seating » Armchairs

Care Instructions

Baresque Upholstery Fabrics

Use a cloth with any of the following in preferred order of use:

1. Clear warm water
2. Mild solution of liquid detergent and warm water
3. Isopropyl Alcohol (rubbing alcohol)

Remove any detergent with a clean, damp cloth. Gently pat dry.

For more difficult stains, dampen a soft white cloth with a solution of household bleach (mix 10% bleach with 90% water). Rub gently. Rinse with a water dampened cloth to remove bleach concentration.

Do not use solvent based or concentrated abrasive cleaning agents, lacquer thinners or nail polish remover as these may cause discolouration over a period of time.

Always test in an inconspicuous area first.

Customisable

This item is made locally, so we have wide flexibility in manufacturing to tailor the Cubix armchair to suit your project specifications.
