

# WHITEHAVEN BIN

Bins » Bin Stations



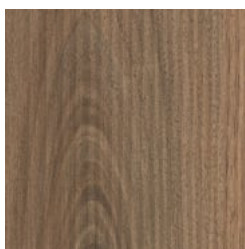
Designed by: **Botton + Gardiner**

# WHITEHAVEN BIN

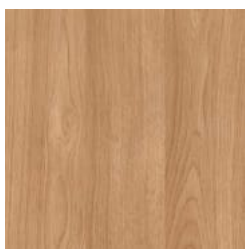
Bins » Bin Stations



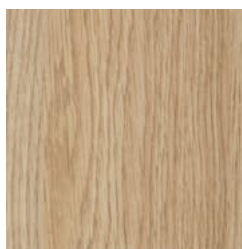
Laminex® Laminate  
Licorice Linea



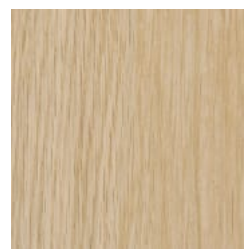
Laminex® Laminate  
Natural Walnut



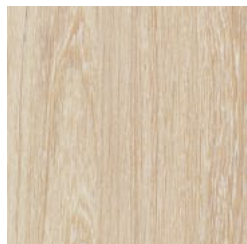
Laminex® Laminate  
Elegant Oak



Laminex® Laminate  
Classic Oak



Laminex® Laminate  
Calm Oak



Laminex® Laminate  
Seasoned Oak



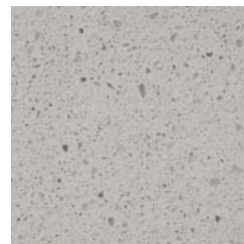
Laminex® Laminate  
Black



Laminex® Laminate  
Charcoal



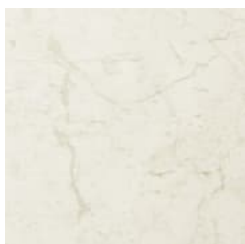
Laminex® Laminate  
Lava Grey



Laminex® Laminate  
Limed Concrete



Laminex® Laminate  
Figured Limestone



Laminex® Laminate  
White Valencia



Stainless Steel Satin  
Finish



Core Powder-Coat  
Palladium Silver Satin



# WHITEHAVEN BIN

Bins » Bin Stations

---

Single, double, triple bin stations with tray return. 120L or 240L capacity. Stainless steel frame. Laminate, v-groove compact laminate options.

---

**Description** The Whitehaven bin with tray return is the ultimate food court bin. Tried and tested over many decades, this bestseller's hardy stainless steel frame protects the bin from trolley damage and is sure to outperform your expectations. Finishes include laminate, v-groove compact laminate options. Available in an extensive range of sizes with optional cleaners storage cupboard.

---

**Made In** Australia

---

**Dimensions**

120L  
Single  
610mmW x 690mmD x 1330mmH

Double  
1170mmW x 690mmD x 1330mmH

Triple  
1730mmW x 690mmD x 1330mmH

240L  
Single  
770mmW x 880mmD x 1470mmH

Double  
1490mmW x 880mmD x 1470mmH

Triple  
2210mmW x 880mmD x 1470mmH

---

# WHITEHAVEN BIN

Bins » Bin Stations

---

Capacity	<u>120L</u>
	Single 1 x 120L wheelie bin
	Double 2 x 120L wheelie bins
	Triple 3 x 120L wheelie bins
	<u>240L</u>
	Single 1x 240L wheelie bin
	Double 2 x 240L wheelie bins
	Triple 3 x 240L wheelie bins
	Wheelie bin not included - available on request.

---

Frame	Stainless steel, satin polished
-------	---------------------------------

---

Powder Coat	Palladium Silver (satin)
-------------	--------------------------

---

Signage	Bins come with engraved enamel filled lettering on the flaps. This can be customised to your project or go with our standard design.
---------	--

---

# WHITEHAVEN BIN

Bins » Bin Stations

---

## Finishes

### Tray Return

5WL texture minimises visual impact of scratching

### Flap

Stainless steel, satin polished

### Frame

Stainless steel, satin polished

### Panels

Indoor

Laminate, vertical v-groove compact laminate

Outdoor Undercover

Vertical v-groove Alfresco compact laminate

### Colours

Choose from our preselected Laminex colours or custom specify your own

### Internal Chute

Silver powder-coated steel

### Fittings

D handles for easy opening, commercial strength magnetic catches and heavy duty commercial butt hinges

### Signage

Engraved enamel lettering on the flap

---

## Sustainability

### Certified Materials

We use laminates that carry internationally recognised Environmental Product Declarations (EPDs).

### Recycled Materials

We locally source our steel. It means we know it uses recycled content and is 100% recyclable.

### Low Pollutants

Our powder-coating process doesn't emit Volatile Organic Compounds (VOCs) and has Environmental Product Declarations (EPDs).

---

## Warranty

5-year warranty. View the [warranty](#) for more details.

---

## Lead Time

6-8 weeks

---

## Assembly & Delivery

Due to their weight, double and triple Whitehaven bins will require a forklift to receive delivery of goods.

---

## Fixing Detail

Surface fixed by others. Anchors not included.

---

# WHITEHAVEN BIN

Bins » Bin Stations

---

## How to Specify

Select your size - single, double, triple, single and cleaners cupboard, double and cleaners cupboard  
Select your capacity - 120 or 240L  
Select your panel finish - laminate or V-groove compact

---

## Care Instructions

### Laminates | Laminex®

A damp cloth will remove spills and greasy spots. Rub with a clean dry cloth to bring back brightness. Occasionally clean with mild dishwashing detergent. To remove heavy build-up of dirt use cleaners such as Mr Muscle, Windex or Ajax Spray n Wipe spray cleaners.

Do not use strongly acidic, alkaline cleaners or bleach for normal cleaning as these might etch the surface

### Powder-Coat

Carefully remove any loose surface deposits with a wet sponge or soft bristled brush.

Use a soft (non-abrasive) cloth or brush and a diluted solution of mild detergent and warm water.

Ensure surfaces are thoroughly rinsed with clean fresh water after cleaning to remove all residues.

Never use thinners, abrasive cleaning agents, alcohol-based, acid or alkali cleaning agents.

### Stainless Steel

Wash the surface regularly using warm water containing soap or mild detergents and rinse the surface with fresh water after cleaning.

When polishing the surface with a soft dry cloth to ensure all moisture is removed, follow the direction of the grain finish.

Use a brush or soft damp cloth to remove loose deposits. Use a cream cleanser and soft cloth for difficult deposits.

Use "Star Brite Rust Stain Remover" to remove tea staining and "Star Brite Chrome & Stainless Steel Polish" to protect the surface after cleaning.

Never use cleaners containing harsh abrasives or high bleach contents. Prolonged contact with chlorine-based cleaners will cause surface pitting, which cannot be repaired.

Never use abrasive materials such as scouring pads, steel wool or metallic scrapers.

For stubborn stains or where "deep cleaning" is required, a mild abrasive cleaner or rust remover may be required.

---

# WHITEHAVEN BIN

Bins » Bin Stations

---

## Additional Comments

Heavy duty SHS steel frame ensures Whitehaven will stand the test of time in heavy duty environments.

D handles for easy opening with commercial strength magnetic catches.

Heavy duty butt hinges will keep your doors level and issue free throughout the life of the bin

---