

ATOMIK RIGHT ANGLE TRIANGLE PLANTER

Accessories » Planters

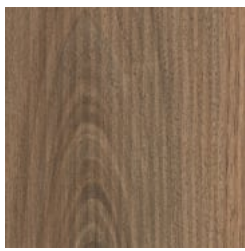


Collection: **Atomik**

Designed by: **Botton + Gardiner**

ATOMIK RIGHT ANGLE TRIANGLE PLANTER

Accessories » Planters



Laminex®
Multipurpose
Compact Laminate
Natural Walnut



Laminex®
Multipurpose
Compact Laminate
Elegant Oak



Laminex®
Multipurpose
Compact Laminate
Classic Oak



Laminex®
Multipurpose
Compact Laminate
Calm Oak



Laminex®
Multipurpose
Compact Laminate
Seasoned Oak



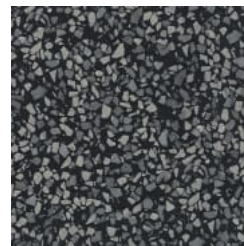
Laminex®
Multipurpose
Compact Laminate
Black



Laminex®
Multipurpose
Compact Laminate
Charcoal



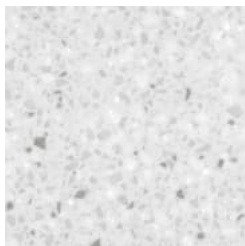
Laminex®
Multipurpose
Compact Laminate
Lava Grey



Corian® Solid Surface
Basalt Terrazzo



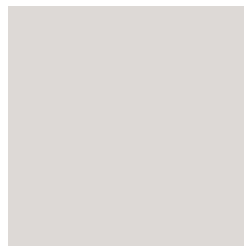
Corian® Solid Surface
Platinum



Corian® Solid Surface
Silver Birch



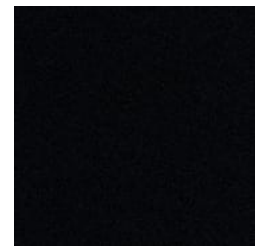
Corian® Solid Surface
Silver Grey



Corian® Solid Surface
Pearl Grey



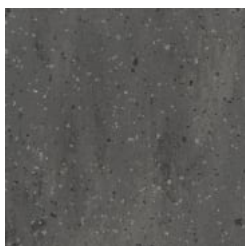
Corian® Solid Surface
Glacier White



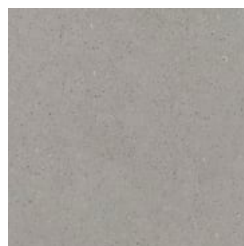
Corian® Solid Surface
Deep Anthracite



Corian® Solid Surface
Deep Titanium



Corian® Solid Surface
Carbon Aggregate



Corian® Solid Surface
Dove



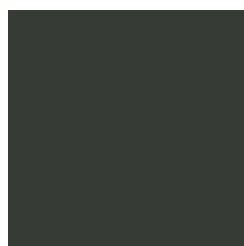
Corian® Solid Surface
Neutral Concrete



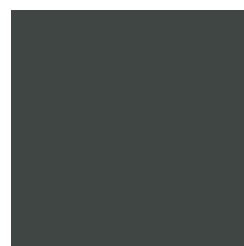
Corian® Solid Surface
Canvas



Hardwood Vic Ash



Core Powder-Coat



Core Powder-Coat



Core Powder-Coat

Core Powder-Coat

ATOMIK RIGHT ANGLE TRIANGLE PLANTER

Accessories » Planters

UV-Resistant
Lacquered Internal
Use Only

White Satin

Black Satin

Charcoal Satin

Palladium Silver Satin



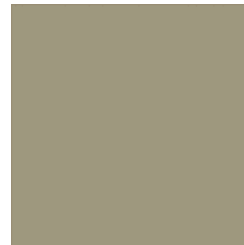
Core Powder-Coat
Matt Black Matt



Core Powder-Coat
Pearl White Gloss



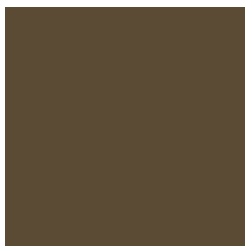
Solid Powder-Coat
Coffee Satin



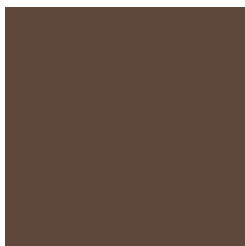
Solid Powder-Coat
Cove Satin



Solid Powder-Coat
Monument Matt



Solid Powder-Coat
Medium Bronze
Kinetic Flat



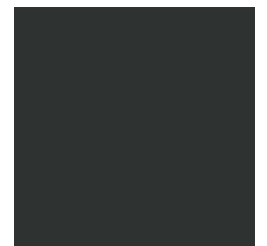
Textured Powder-
Coat Core Ten
Textured Metallic



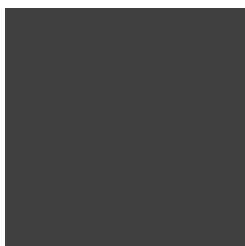
Textured Powder-
Coat Asteroid
Textured Metallic



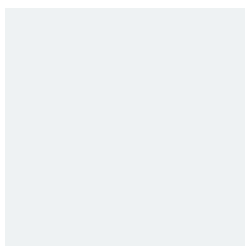
Textured Powder-
Coat Bass Textured
Metallic



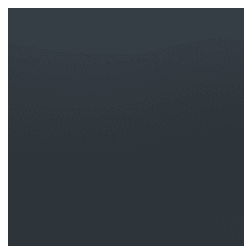
Textured Powder-
Coat Textura Black



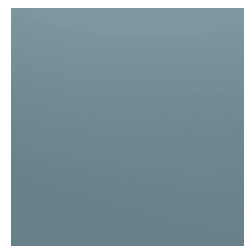
Textured Powder-
Coat Textura
Monument



Textured Powder-
Coat Textura White



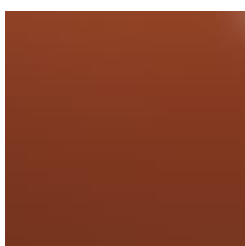
Signature Powder-
Coat Deep Ocean
Satin



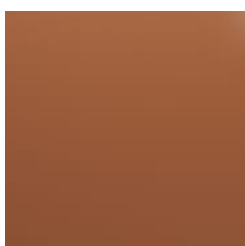
Signature Powder-
Coat Wedgewood
Satin



Signature Powder-
Coat Mangrove Satin



Signature Powder-
Coat Territory Red
Satin



Signature Powder-
Coat Claypot Satin



Signature Powder-
Coat Paperbark Satin



Bold Powder-Coat
Bondi Blue Gloss



Bold Powder-Coat
Leaf Satin

ATOMIK RIGHT ANGLE TRIANGLE PLANTER

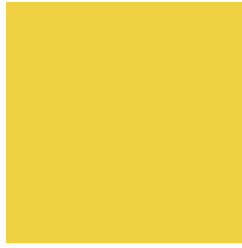
Accessories » Planters



Bold Powder-Coat
Sensation Gloss



Bold Powder-Coat
Lobster Satin



Bold Powder-Coat
Moonlight Satin



ATOMIK RIGHT ANGLE TRIANGLE PLANTER

Accessories » Planters

Modular, right angle triangle planter design. Mix and match a wide range of finishes and configurations to create a range of custom pod options.

Description	The Atomik right angle triangle planter forms part of the Atomik modular seating collection that offers a mix of upholstered ottomans together with planters, tables, and screens in a range of 13 geometric shapes. With flexibility and versatility in mind, multiple configurations of mixed-use pods can be created to suit small or large spaces. Together with a wide range of finishes, Atomik can be tailored to suit specific project requirements for use in shopping centres, hospitality, office break-out areas, commercial lobbies, universities, and schools.
Made In	Australia
Dimensions	1200mmW x 610mmD x 350mmH
Frame	Powder-coated steel. Steel legs elevate the upholstered form off the ground.
Powder Coat	Core White (satin), Black (satin), Charcoal (satin), Palladium Silver (satin), Matt Black (matt), Pearl White (gloss) Solid Coffee (satin), Cove (satin), Monument (matt), Medium Bronze Kinetic (flat) Textured Core Ten (textured metallic), Asteroid (textured metallic), Bass (textured metallic), Textura Black (textured), Textura Monument (textured), Textura White (textured) Signature Deep Ocean (satin), Wedgewood (satin), Mangrove (satin), Territory Red (matt), Claypot (satin), Paperbark (satin) Bold Bondi Blue (gloss), Leaf (satin), Sensation (gloss), Lobster (satin), Moonlight (satin)

ATOMIK RIGHT ANGLE TRIANGLE PLANTER

Accessories » Planters

Finishes

Planter Top

Multipurpose Compact Laminate 13mm | [Laminex®](#)

Licorice Linea, Natural Walnut, Elegant Oak, Classic Oak, Calm Oak, Seasoned Oak, Black, Charcoal, Lava Grey, Limed Concrete, Figured Limestone, White Valencia

Solid Surfaces 12mm | [Corian®](#)

Basalt Terrazzo, Platinum, Silver Birch, Silver Grey, Pearl Grey, Glacier White, Deep Anthracite, Deep Titanium, Carbon Aggregate, Dove, Neutral Concrete, Canvas

A wider selection of materials + finishes is available.

Sustainability

Certified Materials

We use multipurpose compact laminates and non-porous solid surfaces that carry internationally recognised Environmental Product Declarations (EPDs).

Recycled Materials

We locally source our steel and aluminium. It means we know it uses recycled content and is 100% recyclable.

Low Pollutants

Our powder-coating process doesn't emit Volatile Organic Compounds (VOCs) and has Environmental Product Declarations (EPDs).

Warranty

2-year warranty. View the [warranty](#) for more details.

Lead Time

6-8 weeks

Assembly & Delivery

Assembly

Some simple assembly is required (by others) to connect modules - brackets fitted to the underside simply need to be turned and modules pushed together. See brochure for details. Backrests and arms are pre-fitted to the ottomans. A drawing will be supplied with the recommended connection order.

Delivery

Atomik is delivered to site in modules by furniture removalists.

Fixing Detail

Freestanding only - loose on glides.
Modules are fixed together by ratchet connectors.

How to Specify

Select your configuration or create your own
Select your surface finish
Select your frame finish

ATOMIK RIGHT ANGLE TRIANGLE PLANTER

Accessories » Planters

Care Instructions

Multipurpose Compact Laminates | Laminex®

A damp cloth will remove spills and greasy spots. Rub with a clean dry cloth to bring back brightness. Occasionally clean with mild dishwashing detergent. To remove heavy build-up of dirt use cleaners such as Mr Muscle, Windex, or Ajax Spray n Wipe spray cleaners.

Do not use strong acidic, alkaline cleaners or bleach for normal cleaning as these might etch the surface.

Solid Surfaces | Corian®

Generally, when caring for Corian always start with a simple clean eg. using a damp sponge or cloth. Avoid using abrasive scouring pads for routine cleaning. Rinse clean.

For a deep clean of stubborn stains, a more thorough clean and refresh using a mild abrasive cleanser is recommended like Gumption, JIF Cream Cleanser or Ajax cream or powder cleanser. Firmly wipe with a damp cloth using a wide circular motion. Always finish by rinsing and wiping your surface with a damp cloth or sponge.

Powder-Coat Finishes

Carefully remove any loose surface deposits with a wet sponge or soft bristled brush.

Use a soft (non-abrasive) cloth or brush and a diluted solution of mild detergent and warm water.

Ensure surfaces are thoroughly rinsed with clean fresh water after cleaning to remove all residues.

Never use thinners, abrasive cleaning agents, alcohol-based, acid or alkali cleaning agents.

Customisable

Atomik is made locally and can be tailored to suit your interior project. Select from a range of table top finishes such as Corian®, engineered stone and digital print on a variety of substrates, as well as custom screen perforations or custom metallic powder-coats and much more.

Botton + Gardiner can assist you with configuring your layouts. 2D or 3D drawings or kits of the modules are available.

Optional GPOs can be added to the modular pods to power them up as charging or working stations.
