

# ATOMIK SCREEN

Accessories » Screens

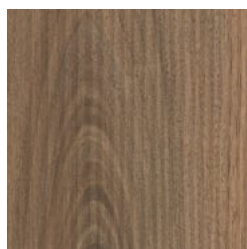


Collection: **Atomik**

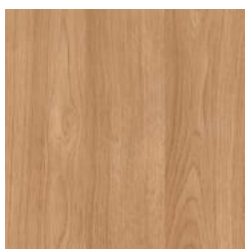
Designed by: **Botton + Gardiner**

# ATOMIK SCREEN

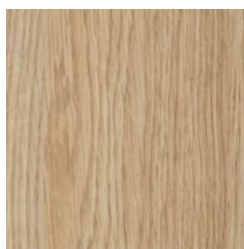
Accessories » Screens



Laminex®  
Multipurpose  
Compact Laminate  
Natural Walnut



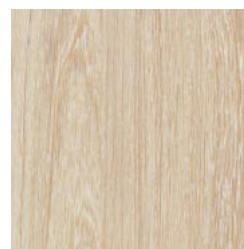
Laminex®  
Multipurpose  
Compact Laminate  
Elegant Oak



Laminex®  
Multipurpose  
Compact Laminate  
Classic Oak



Laminex®  
Multipurpose  
Compact Laminate  
Calm Oak



Laminex®  
Multipurpose  
Compact Laminate  
Seasoned Oak



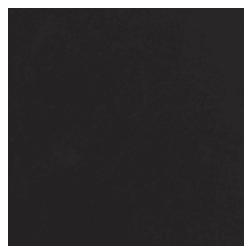
Laminex®  
Multipurpose  
Compact Laminate  
Black



Laminex®  
Multipurpose  
Compact Laminate  
Charcoal



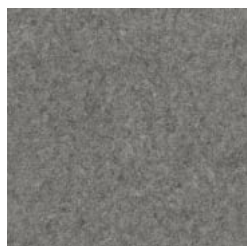
Laminex®  
Multipurpose  
Compact Laminate  
Lava Grey



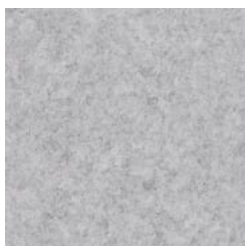
Baresque Zintra  
Acoustic Panel 12mm  
Tar



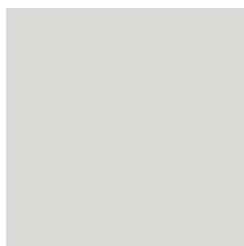
Baresque Zintra  
Acoustic Panel 12mm  
Ash



Baresque Zintra  
Acoustic Panel 12mm  
Pewter



Baresque Zintra  
Acoustic Panel 12mm  
Smoke



Baresque Zintra  
Acoustic Panel 12mm  
Frost



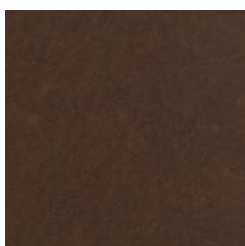
Baresque Zintra  
Acoustic Panel 12mm  
Chambray



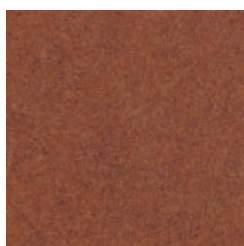
Baresque Zintra  
Acoustic Panel 12mm  
Greige



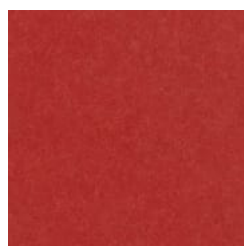
Baresque Zintra  
Acoustic Panel 12mm  
Fossil



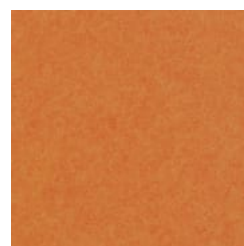
Baresque Zintra  
Acoustic Panel 12mm  
Bark



Baresque Zintra  
Acoustic Panel 12mm  
Brick



Baresque Zintra  
Acoustic Panel 12mm  
Ochre



Baresque Zintra  
Acoustic Panel 12mm  
Mandarin

# ATOMIK SCREEN

Accessories » Screens



Baresque Zintra  
Acoustic Panel 12mm  
Ecrú



Baresque Zintra  
Acoustic Panel 12mm  
Linen



Baresque Zintra  
Acoustic Panel 12mm  
Pebble



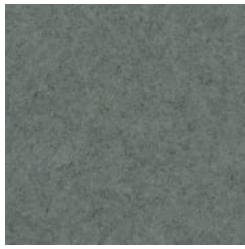
Baresque Zintra  
Acoustic Panel 12mm  
Ivory



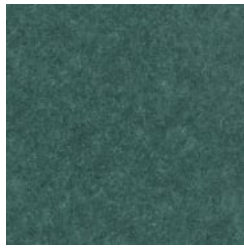
Baresque Zintra  
Acoustic Panel 12mm  
Cobalt



Baresque Zintra  
Acoustic Panel 12mm  
Sky



Baresque Zintra  
Acoustic Panel 12mm  
Cadet



Baresque Zintra  
Acoustic Panel 12mm  
Malachite



Baresque Zintra  
Acoustic Panel 12mm  
Midnight



Baresque Zintra  
Acoustic Panel 12mm  
Olive



Baresque Zintra  
Acoustic Panel 12mm  
Lime



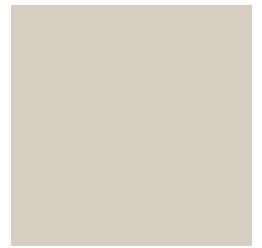
Baresque Zintra  
Acoustic Panel 12mm  
Sunshine



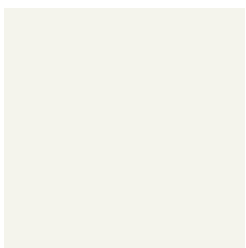
Baresque  
Lightblocks Board  
Leadman



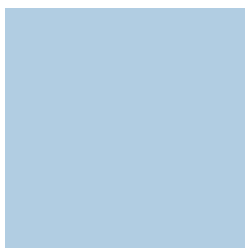
Baresque  
Lightblocks Board  
Chocolate



Baresque  
Lightblocks Board  
Buff It



Baresque  
Lightblocks Board  
Vivid White



Baresque  
Lightblocks Board  
Blue Veil



Baresque  
Lightblocks Board  
Water Raceway



Baresque  
Lightblocks Board  
Summer Waters



Baresque  
Lightblocks Board  
Moss Vale



Baresque



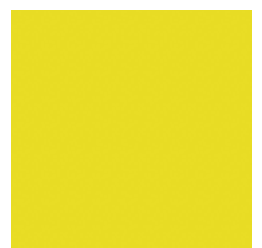
Baresque



Baresque



Baresque



Baresque

# ATOMIK SCREEN

Accessories » Screens

Lightblocks Board  
Lime



Baresque  
Lightblocks Board  
Lemon Delicious

Lightblocks Board  
Mist Morning



Baresque  
Lightblocks Board  
Porcellan

Lightblocks Board  
Neverland



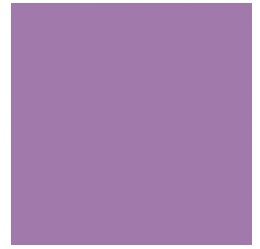
Baresque  
Lightblocks Board  
Hot Lips

Lightblocks Board  
Simpson Surprise



Baresque  
Lightblocks Board  
Lickedey Lick

Lightblocks Board  
Birdie



Baresque  
Lightblocks Board  
Design Delight



Baresque  
Lightblocks Board  
Madame Mauve

Core Powder-Coat  
White Satin



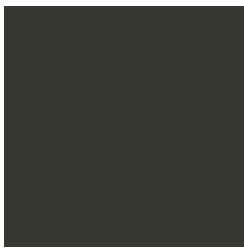
Core Powder-Coat  
Black Satin



Core Powder-Coat  
Charcoal Satin



Core Powder-Coat  
Palladium Silver Satin



Core Powder-Coat  
Matt Black Matt

Core Powder-Coat  
Pearl White Gloss



Solid Powder-Coat  
Coffee Satin



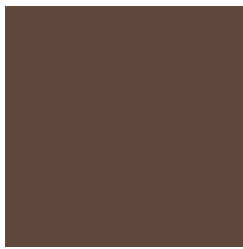
Solid Powder-Coat  
Cove Satin



Solid Powder-Coat  
Monument Matt



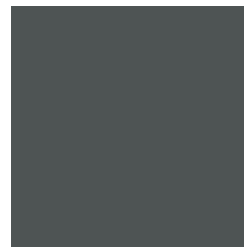
Solid Powder-Coat  
Medium Bronze  
Kinetic Flat



Textured Powder-  
Coat Core Ten  
Textured Metallic



Textured Powder-  
Coat Asteroid  
Textured Metallic



Textured Powder-  
Coat Bass Textured  
Metallic



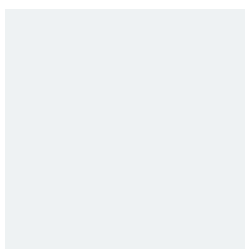
Textured Powder-  
Coat Textura Black

# ATOMIK SCREEN

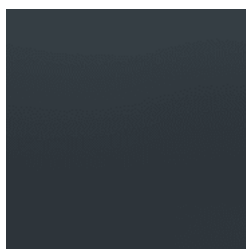
Accessories » Screens



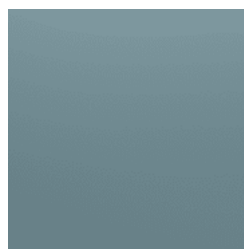
Textured Powder-Coat Textura Monument



Textured Powder-Coat Textura White



Signature Powder-Coat Deep Ocean Satin



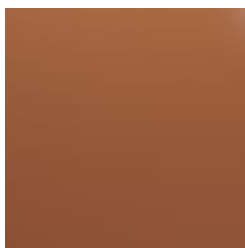
Signature Powder-Coat Wedgewood Satin



Signature Powder-Coat Mangrove Satin



Signature Powder-Coat Territory Red Satin



Signature Powder-Coat Claypot Satin



Signature Powder-Coat Paperbark Satin



Bold Powder-Coat Bondi Blue Gloss



Bold Powder-Coat Leaf Satin



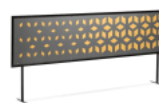
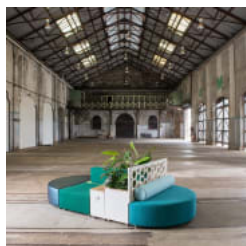
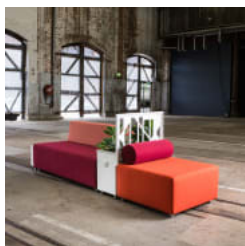
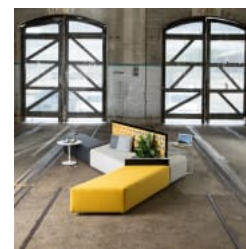
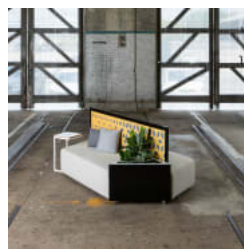
Bold Powder-Coat Sensation Gloss



Bold Powder-Coat Lobster Satin



Bold Powder-Coat Moonlight Satin



# ATOMIK SCREEN

Accessories » Screens

Modern, modular screen in 4 designs and 3 sizes. Mix and match materials, finishes and configurations to create a range of custom pod options.

## Description

The Atomik screen forms part of the Atomik modular seating collection that offers a mix of upholstered ottomans together with planters, tables, and screens in a range of 13 geometric shapes. The screen is available in 4 cut-out designs and 3 sizes. With flexibility and versatility in mind, multiple configurations of mixed-use pods can be created to suit small or large spaces. Together with a wide range of finishes, Atomik can be tailored to suit specific project requirements for use in shopping centres, hospitality, office break-out areas, commercial lobbies, universities, and schools.

## Made In

Australia

## Dimensions

S1 Screen  
850mmW x 25mmD x 1050mmH

S2 Screen  
1700mmW x 25mmD x 1050mmH

S3 Screen  
2450mmW x 25mmD x 1050mmH

Stand support feet: 265mmD

## Frame

Powder-coated steel

## Powder Coat

Core  
White (satin), Black (satin), Charcoal (satin), Palladium Silver (satin), Matt Black (matt), Pearl White (gloss)

Solid  
Coffee (satin), Cove (satin), Monument (matt), Medium Bronze Kinetic (flat)

Textured  
Core Ten (textured metallic), Asteroid (textured metallic), Bass (textured metallic), Textura Black (textured), Textura Monument (textured), Textura White (textured)

Signature  
Deep Ocean (satin), Wedgewood (satin), Mangrove (satin), Territory Red (matt), Claypot (satin), Paperbark (satin)

Bold  
Bondi Blue (gloss), Leaf (satin), Sensation (gloss), Lobster (satin), Moonlight (satin)

# ATOMIK SCREEN

Accessories » Screens

---

## Finishes

### Screen Panel

[Compact laminates](#), [Zintra acoustic panels](#) in 24 colours, [Lightblocks boards](#) in 19 colours with a ply, white or black core.

There are 4 standard patterns available if you would like to perforate your screen - Asiatic, Shard, Setro or Perdita designs.

If you prefer a graphic or print applied to your screen, we can digitally print onto Zintra acoustic panels or Lightblocks boards.

The panel can be customised to match your project requirements. The specified material needs to be 12-18mm thick.

---

## Sustainability

### Certified Materials

We use multipurpose compact laminates that carry internationally recognised Environmental Product Declarations (EPDs).

### Recycled Materials

Zintra acoustic panels are made from 100% recyclable materials.

We locally source our steel. It means we know it uses recycled content and is 100% recyclable.

### Low Pollutants

Our powder-coating process doesn't emit Volatile Organic Compounds (VOCs) and has Environmental Product Declarations (EPDs).

---

## Warranty

2-year warranty. View the [warranty](#) for more details.

---

## Lead Time

6-8 weeks

---

## Assembly & Delivery

### Assembly

Some simple assembly is required (by others) to connect modules - brackets fitted to the underside simply need to be turned and modules pushed together. See brochure for details. Backrests and arms are pre-fitted to the ottomans. A drawing will be supplied with the recommended connection order.

### Delivery

Atomik is delivered to site in modules by furniture removalists.

---

## Fixing Detail

Freestanding only - loose on glides.  
Modules are fixed together by ratchet connectors.

---

## How to Specify

Select your configuration or create your own  
Select your surface finish  
Select your frame finish

---

# ATOMIK SCREEN

Accessories » Screens

---

## Care Instructions

### Multipurpose Compact Laminates | Laminex®

A damp cloth will remove spills and greasy spots. Rub with a clean dry cloth to bring back brightness. Occasionally clean with mild dishwashing detergent. To remove heavy build-up of dirt use cleaners such as Mr Muscle, Windex or Ajax Spray n Wipe spray cleaners.

Do not use strongly acidic, alkaline cleaners or bleach for normal cleaning as these might etch the surface

### Zintra Acoustic Panel

Remove spills immediately using a damp clean cloth.

A fabric lint brush or soft head on a vacuum cleaner may be used to remove dust.

Carpet and fabric cleaners can be used. It is recommended to test first in an inconspicuous area.

### Lightblocks Boards

Use warm water, mild detergent and a soft sponge, cloth, or chamois to clean Lightblocks.

Light refinishing - if there is only a light scratch, refinishing can be achieved by rubbing the area in a random circular motion with a fine steel scouring pad (Scotch-Brite). Test in an inconspicuous area first before attempting a main area.

### Powder-Coat Finishes

Carefully remove any loose surface deposits with a wet sponge or soft bristled brush.

Use a soft (non-abrasive) cloth or brush and a diluted solution of mild detergent and warm water.

Ensure surfaces are thoroughly rinsed with clean fresh water after cleaning to remove all residues.

Never use thinners, abrasive cleaning agents, alcohol-based, acid or alkali cleaning agents.

---

## Customisable

Atomik is made locally and can be tailored to suit your interior project. Select from a range of table top finishes such as Corian®, engineered stone and digital print on a variety of substrates, as well as custom screen perforations or custom metallic powder-coats and much more.

Botton + Gardiner can assist you with configuring your layouts. 2D or 3D drawings or kits of the modules are available.

Optional GPOs can be added to the modular pods to power them up as charging or working stations.

---