

# ATOMIK EQUILATERAL TRIANGLE PLANTER

Accessories » Planters



Collections: **Atomik**

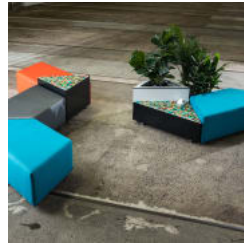
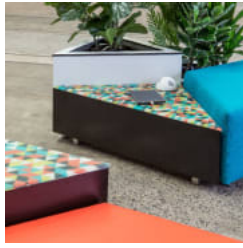
Designed By: **Botton + Gardiner**

Applications: **Indoor**

# ATOMIK EQUILATERAL TRIANGLE PLANTER

Accessories » Planters

---



# ATOMIK EQUILATERAL TRIANGLE PLANTER

Accessories » Planters

---

Modular, equilateral triangle planter design. Mix and match a wide range of finishes and configurations to create a range of custom pod options.

---

## Description

The Atomik equilateral triangle planter forms part of the Atomik modular seating collection that offers a mix of upholstered ottomans together with planters, tables, and screens in a range of 13 geometric shapes. With flexibility and versatility in mind, multiple configurations of mixed-use pods can be created to suit small or large spaces. Together with a wide range of finishes, Atomik can be tailored to suit specific project requirements for use in shopping centres, hospitality, office break-out areas, commercial lobbies, universities, and schools.

---

## Sustainability

### Certified Materials

We use multipurpose compact laminates and non-porous solid surfaces that carry internationally recognised Environmental Product Declarations (EPDs).

### Recycled Materials

We locally source our steel and aluminium. It means we know it uses recycled content and is 100% recyclable.

### Low Pollutants

Our powder-coating process doesn't emit Volatile Organic Compounds (VOCs) and has Environmental Product Declarations (EPDs).

---

## Finishes

### Planter Top

#### Multipurpose Compact Laminate 13mm | [Laminex®](#)

Licorice Linea, Natural Walnut, Elegant Oak, Classic Oak, Calm Oak, Seasoned Oak, Black, Charcoal, Lava Grey, Limed Concrete, Figured Limestone, White Valencia

#### Solid Surfaces 12mm | [Corian®](#)

Basalt Terrazzo, Platinum, Silver Birch, Silver Grey, Pearl Grey, Glacier White, Deep Anthracite, Deep Titanium, Carbon Aggregate, Dove, Neutral Concrete, Canvas

A wider selection of materials + finishes is available.

---

# ATOMIK EQUILATERAL TRIANGLE PLANTER

Accessories » Planters

Powder Coat	<div>Core</div> <div>White (satin), Black (satin), Charcoal (satin), Palladium Silver (satin), Matt Black (matt), Pearl White (gloss)</div> <div>Solid</div> <div>Coffee (satin), Cove (satin), Monument (matt), Medium Bronze Kinetic (flat)</div> <div>Textured</div> <div>Core Ten (textured metallic), Asteroid (textured metallic), Bass (textured metallic), Textura Black (textured), Textura Monument (textured), Textura White (textured)</div> <div>Signature</div> <div>Deep Ocean (satin), Wedgewood (satin), Mangrove (satin), Territory Red (matt), Claypot (satin), Paperbark (satin)</div> <div>Bold</div> <div>Bondi Blue (gloss), Leaf (satin), Sensation (gloss), Lobster (satin), Moonlight (satin)</div>
Dimensions	850mmW x 750mmD x 550mmH
Frame	<div>Powder-coated steel.</div> <div>Steel legs elevate the upholstered form off the ground.</div>
Made In	Australia
Lead Time	6-8 weeks
Assembly & Delivery	<div>Assembly</div> <div>Some simple assembly is required (by others) to connect modules - brackets fitted to the underside simply need to be turned and modules pushed together. See brochure for details. Backrests and arms are pre-fitted to the ottomans. A drawing will be supplied with the recommended connection order.</div> <div>Delivery</div> <div>Atomik is delivered to site in modules by furniture removalists.</div>
Fixing Detail	<div>Freestanding only - loose on glides.</div> <div>Modules are fixed together by ratchet connectors.</div>

# ATOMIK EQUILATERAL TRIANGLE PLANTER

Accessories » Planters

## Care Instructions

### Multipurpose Compact Laminates | Laminex®

A damp cloth will remove spills and greasy spots. Rub with a clean dry cloth to bring back brightness. Occasionally clean with mild dishwashing detergent. To remove heavy build-up of dirt use cleaners such as Mr Muscle, Windex, or Ajax Spray n Wipe spray cleaners.

Do not use strong acidic, alkaline cleaners or bleach for normal cleaning as these might etch the surface.

### Solid Surfaces | Corian®

Generally, when caring for Corian always start with a simple clean eg. using a damp sponge or cloth. Avoid using abrasive scouring pads for routine cleaning. Rinse clean.

For a deep clean of stubborn stains, a more thorough clean and refresh using a mild abrasive cleanser is recommended like Gumption, JIF Cream Cleanser or Ajax cream or powder cleanser. Firmly wipe with a damp cloth using a wide circular motion. Always finish by rinsing and wiping your surface with a damp cloth or sponge.

### Powder-Coat Finishes

Carefully remove any loose surface deposits with a wet sponge or soft bristled brush.

Use a soft (non-abrasive) cloth or brush and a diluted solution of mild detergent and warm water.

Ensure surfaces are thoroughly rinsed with clean fresh water after cleaning to remove all residues.

Never use thinners, abrasive cleaning agents, alcohol-based, acid or alkali cleaning agents.

## Warranty

2-year warranty. View the [warranty](#) for more details.

## Customisable

Atomik is made locally and can be tailored to suit your interior project. Select from a range of table top finishes such as Corian®, engineered stone and digital print on a variety of substrates, as well as custom screen perforations or custom metallic powder-coats and much more.

Botton + Gardiner can assist you with configuring your layouts. 2D or 3D drawings or kits of the modules are available.

Optional GPOs can be added to the modular pods to power them up as charging or working stations.

## How to Specify

Select your configuration or create your own  
Select your surface finish  
Select your frame finish



# ATOMIK EQUILATERAL TRIANGLE PLANTER

Accessories » Planters

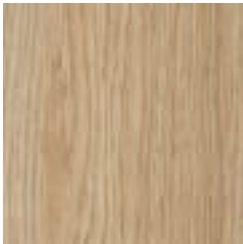
## Colour & Finish Options



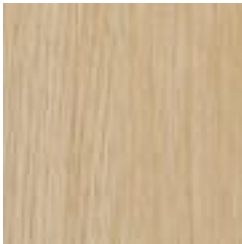
Laminex®  
Multipurpose  
Compact Laminate  
Natural Walnut



Laminex®  
Multipurpose  
Compact Laminate  
Elegant Oak



Laminex®  
Multipurpose  
Compact Laminate  
Classic Oak



Laminex®  
Multipurpose  
Compact Laminate  
Calm Oak



Laminex®  
Multipurpose  
Compact Laminate  
Seasoned Oak



Laminex®  
Multipurpose  
Compact Laminate  
Black



Laminex®  
Multipurpose  
Compact Laminate  
Charcoal



Laminex®  
Multipurpose  
Compact Laminate  
Lava Grey



Corian® Solid Surface  
Basalt Terrazzo



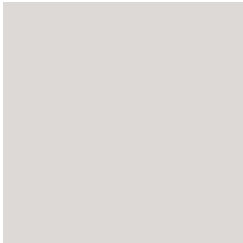
Corian® Solid Surface  
Platinum



Corian® Solid Surface  
Silver Birch



Corian® Solid Surface  
Silver Grey



Corian® Solid Surface  
Pearl Grey



Corian® Solid Surface  
Glacier White



Corian® Solid Surface  
Deep Anthracite



Corian® Solid Surface  
Deep Titanium



Corian® Solid Surface  
Carbon Aggregate



Corian® Solid Surface  
Dove



Corian® Solid Surface  
Neutral Concrete



Corian® Solid Surface  
Canvas

# ATOMIK EQUILATERAL TRIANGLE PLANTER

Accessories » Planters



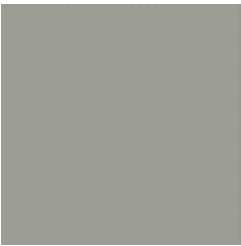
Hardwood Vic Ash  
UV-Resistant  
Lacquered Internal  
Use Only



Core Powder-Coat  
Black Satin



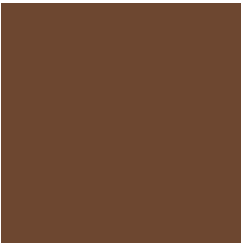
Core Powder-Coat  
Charcoal Satin



Core Powder-Coat  
Palladium Silver Satin



Core Powder-Coat  
Matt Black Matt



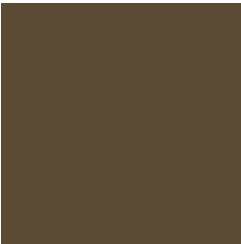
Solid Powder-Coat  
Coffee Satin



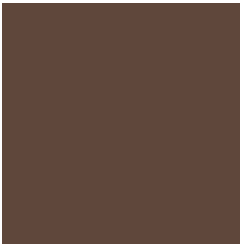
Solid Powder-Coat  
Cove Satin



Solid Powder-Coat  
Monument Matt



Solid Powder-Coat  
Medium Bronze  
Kinetic Flat



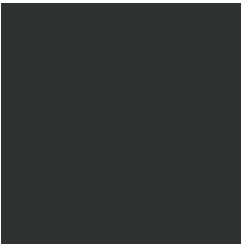
Textured Powder-  
Coat Core Ten  
Textured Metallic



Textured Powder-  
Coat Asteroid  
Textured Metallic



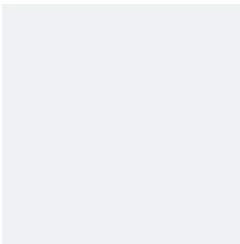
Textured Powder-  
Coat Bass Textured  
Metallic



Textured Powder-  
Coat Textura Black



Textured Powder-  
Coat Textura  
Monument



Textured Powder-  
Coat Textura White



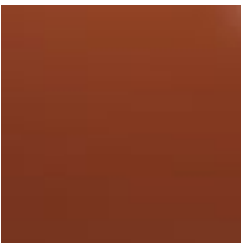
Signature Powder-  
Coat Deep Ocean  
Satin



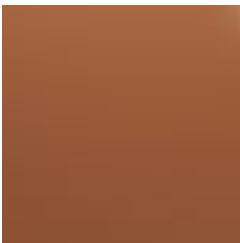
Signature Powder-  
Coat Wedgewood  
Satin



Signature Powder-  
Coat Mangrove Satin



Signature Powder-



Signature Powder-



Signature Powder-



Bold Powder-Coat



Bold Powder-Coat

# ATOMIK EQUILATERAL TRIANGLE PLANTER

Accessories » Planters

Coat Territory Red  
Satin



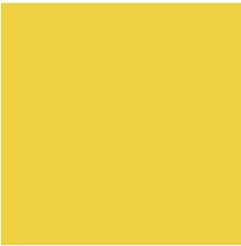
Bold Powder-Coat  
Sensation Gloss

Coat Claypot Satin



Bold Powder-Coat  
Lobster Satin

Coat Paperbark Satin



Bold Powder-Coat  
Moonlight Satin

Bondi Blue Gloss

Leaf Satin