

# ATOMIK LARGE TRAPEZOID OTTOMAN

Seating » Ottomans

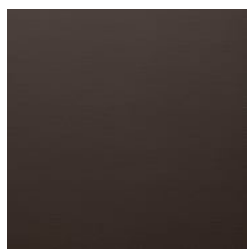


Collection: **Atomik**

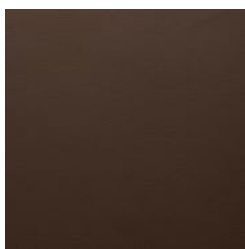
Designed by: **Botton + Gardiner**

# ATOMIK LARGE TRAPEZOID OTTOMAN

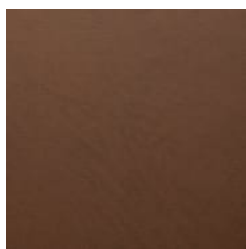
Seating » Ottomans



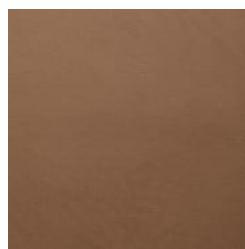
Baresque Chamois  
Upholstery Fabric  
Espresso



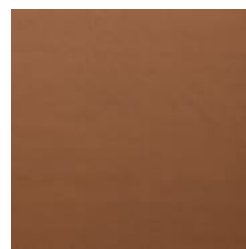
Baresque Chamois  
Upholstery Fabric  
Truffle



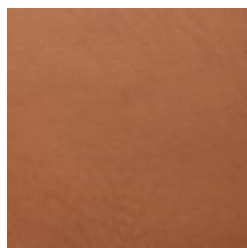
Baresque Chamois  
Upholstery Fabric  
Mahogany



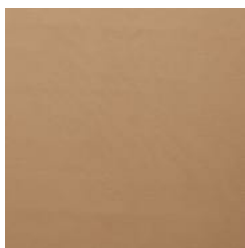
Baresque Chamois  
Upholstery Fabric  
Cappuccino



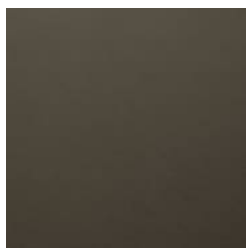
Baresque Chamois  
Upholstery Fabric  
Cognac



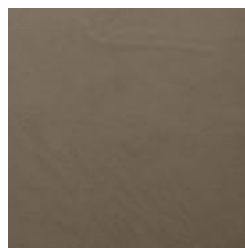
Baresque Chamois  
Upholstery Fabric  
Luggage



Baresque Chamois  
Upholstery Fabric  
Camel



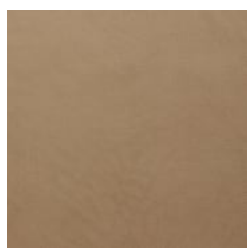
Baresque Chamois  
Upholstery Fabric  
Storm



Baresque Chamois  
Upholstery Fabric  
Antelope



Baresque Chamois  
Upholstery Fabric  
Elephant



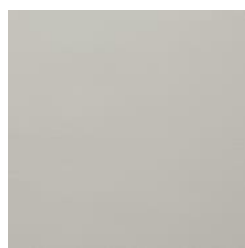
Baresque Chamois  
Upholstery Fabric  
Cashew



Baresque Chamois  
Upholstery Fabric  
Fawn



Baresque Chamois  
Upholstery Fabric  
Bone



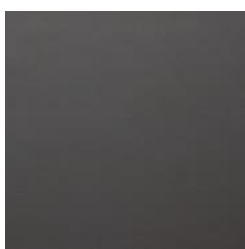
Baresque Chamois  
Upholstery Fabric  
Fog



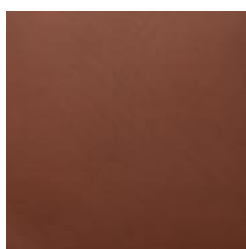
Baresque Chamois  
Upholstery Fabric  
Pewter



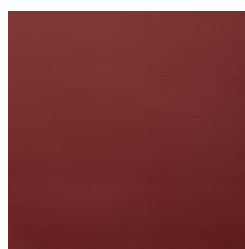
Baresque Chamois  
Upholstery Fabric  
Patina



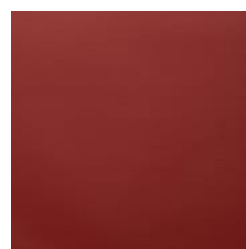
Baresque Chamois  
Upholstery Fabric  
Charcoal



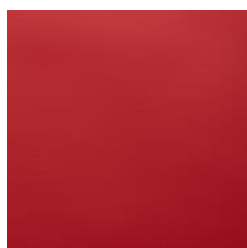
Baresque Chamois  
Upholstery Fabric  
Cinnamon



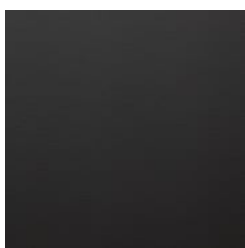
Baresque Chamois  
Upholstery Fabric  
Bordeaux



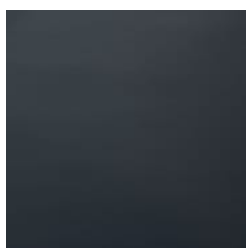
Baresque Chamois  
Upholstery Fabric  
Salsa



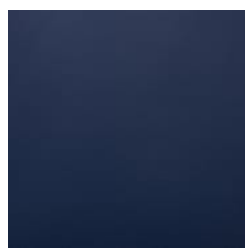
Baresque Chamois



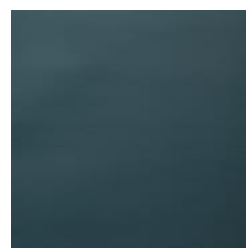
Baresque Chamois



Baresque Chamois



Baresque Chamois



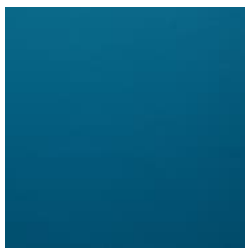
Baresque Chamois

# ATOMIK LARGE TRAPEZOID OTTOMAN

Seating » Ottomans

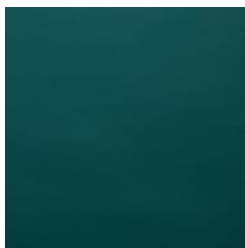
---

Upholstery Fabric  
Molten



Baresque Chamois  
Upholstery Fabric  
Paradise

Upholstery Fabric  
Black



Baresque Chamois  
Upholstery Fabric  
Mallard

Upholstery Fabric  
Navy



Baresque Chamois  
Upholstery Fabric  
Sassafrass

Upholstery Fabric  
Indigo



Upholstery Fabric  
Cerulean



# ATOMIK LARGE TRAPEZOID OTTOMAN

Seating » Ottomans

Modern, modular, large trapezoid ottoman design. Mix and match upholstery fabrics and configurations to create a range of custom seating options.

**Description** The Atomik large trapezoid ottoman forms part of the Atomik modular seating collection that offers a mix of upholstered ottomans and lounge seats together with planters, tables, and screens in a range of 13 geometric shapes. With flexibility and versatility in mind, multiple configurations of mixed-use pods can be created to suit small or large spaces. Together with a wide range of finishes, Atomik can be tailored to suit specific project requirements for use in shopping centres, hospitality, office break-out areas, commercial lobbies, universities, and schools.

**Made In** Australia

**Dimensions** 2550mmW x 850mmD x 450mmH  
Angle: 60°  
Optional backrest H: 350mm  
Overall height with backrest: 800mm  
Optional bolster H: 250mm  
Overall height with backrest: 700mm

**Frame** Internal Frame  
Medium Density Fibreboard (MDF)  
Steel legs elevate the upholstered form off the ground.

**Fabric Amount Required** 5.2m - based on one plain fabric 137cm wide.  
Optional Backrests  
Backrest BR1 700mmL Short backrest: 0.8mtrs  
Backrest BR2 1400mmL Long backrest: 1.5mtrs  
Bolster BO1 700mmL Short bolster: 0.8mtrs  
Bolster BO2 1400mmL Long bolster: 1.5mtrs  
Optional Arm  
Armrest - 0.8mtrs each

# ATOMIK LARGE TRAPEZOID OTTOMAN

Seating » Ottomans

---

## Finishes

### Upholstery Fabrics

Specify a [Baresque upholstery fabric](#) or supply your own to be approved by us to ensure it is fit for purpose.

### [Baresque](#)

[Chamois](#): Espresso, Truffle, Mahogany, Cappuccino, Cognac, Luggage, Camel, Storm, Antelope, Elephant, Cashew, Fawn, Bone, Fog, Pewter, Patina, Charcoal, Cinnamon, Bordeaux, Salsa, Molten, Black, Navy, Indigo, Cerulean, Paradise, Mallard, Sassafrass

A wider selection of materials + finishes is available.

---

## Sustainability

### Recycled Materials

We locally source our steel. It means we know it uses recycled content and is 100% recyclable.

---

## Warranty

2-year warranty. View the [warranty](#) for more details.

---

## Lead Time

6-8 weeks

---

## Assembly & Delivery

### Assembly

Some simple assembly is required (by others) to connect modules - brackets fitted to the underside simply need to be turned and modules pushed together. See brochure for details. Backrests and arms are pre-fitted to the ottomans. A drawing will be supplied with the recommended connection order.

### Delivery

Atomik is delivered to site in modules by furniture removalists.

---

## Fixing Detail

Freestanding only - loose on glides.  
Modules are fixed together by ratchet connectors.

---

## How to Specify

Select your configuration or create your own  
Select your fit for purpose upholstery fabric

---

# ATOMIK LARGE TRAPEZOID OTTOMAN

Seating » Ottomans

---

## Care Instructions

### Baresque Upholstery Fabrics

Use a cloth with any of the following in preferred order of use:

1. Clear warm water
2. Mild solution of liquid detergent and warm water
3. Isopropyl Alcohol (rubbing alcohol)

Remove any detergent with a clean, damp cloth. Gently pat dry.

For more difficult stains, dampen a soft white cloth with a solution of household bleach (mix 10% bleach with 90% water). Rub gently. Rinse with a water dampened cloth to remove bleach concentration.

Do not use solvent based or concentrated abrasive cleaning agents, lacquer thinners or nail polish remover as these may cause discolouration over a period of time.

Always test in an inconspicuous area first.

---

## Customisable

Atomik is made locally and can be tailored to suit your interior project. Select from a range of table top finishes such as Corian®, engineered stone and digital print on a variety of substrates, as well as custom screen perforations or custom metallic powder-coats and much more.

Botton + Gardiner can assist you with configuring your layouts. 2D or 3D drawings or kits of the modules are available.

Optional GPOs can be added to the modular pods to power them up as charging or working stations.

---

## Additional Comments

Commercial-grade foam is used for padding and comfort.

---