

ATOMIK LARGE MOON OTTOMAN

Seating » Ottomans

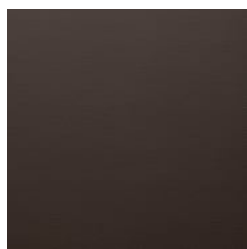


Collection: **Atomik**

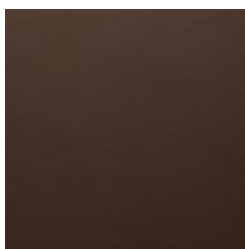
Designed by: **Botton + Gardiner**

ATOMIK LARGE MOON OTTOMAN

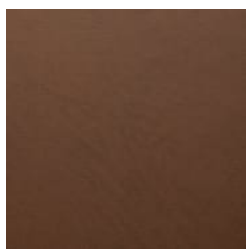
Seating » Ottomans



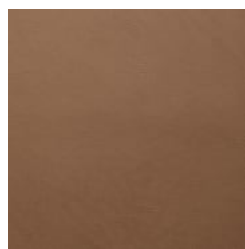
Baresque Chamois
Upholstery Fabric
Espresso



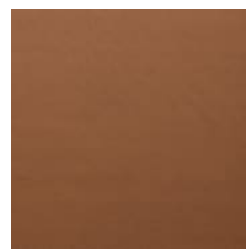
Baresque Chamois
Upholstery Fabric
Truffle



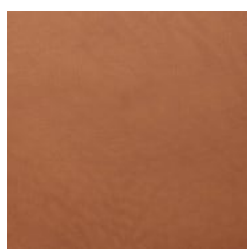
Baresque Chamois
Upholstery Fabric
Mahogany



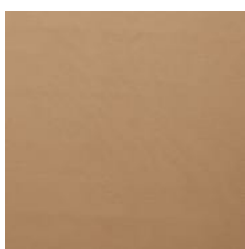
Baresque Chamois
Upholstery Fabric
Cappuccino



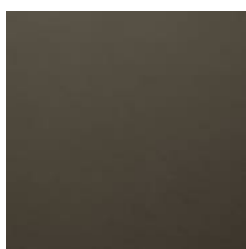
Baresque Chamois
Upholstery Fabric
Cognac



Baresque Chamois
Upholstery Fabric
Luggage



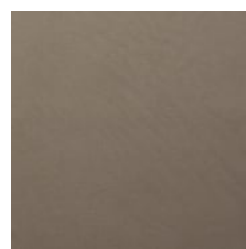
Baresque Chamois
Upholstery Fabric
Camel



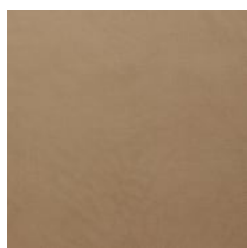
Baresque Chamois
Upholstery Fabric
Storm



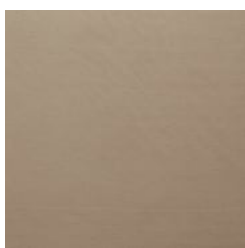
Baresque Chamois
Upholstery Fabric
Antelope



Baresque Chamois
Upholstery Fabric
Elephant



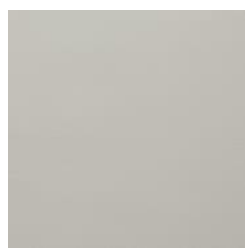
Baresque Chamois
Upholstery Fabric
Cashew



Baresque Chamois
Upholstery Fabric
Fawn



Baresque Chamois
Upholstery Fabric
Bone



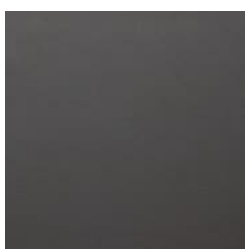
Baresque Chamois
Upholstery Fabric
Fog



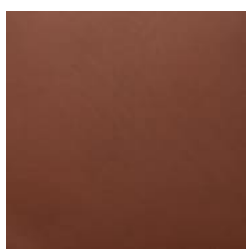
Baresque Chamois
Upholstery Fabric
Pewter



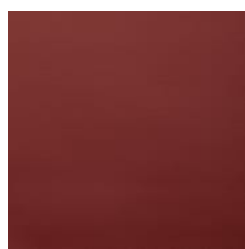
Baresque Chamois
Upholstery Fabric
Patina



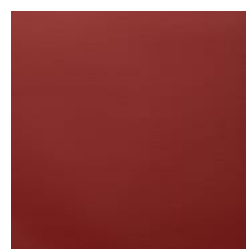
Baresque Chamois
Upholstery Fabric
Charcoal



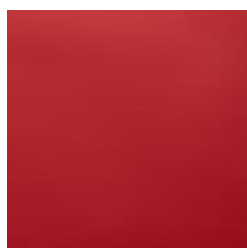
Baresque Chamois
Upholstery Fabric
Cinnamon



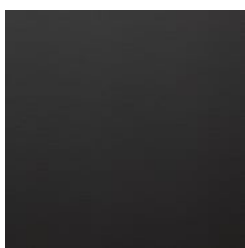
Baresque Chamois
Upholstery Fabric
Bordeaux



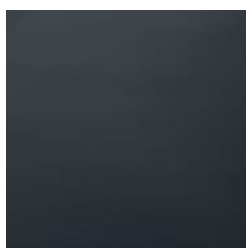
Baresque Chamois
Upholstery Fabric
Salsa



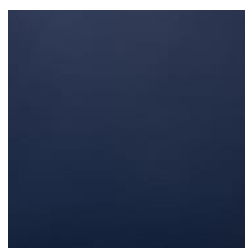
Baresque Chamois



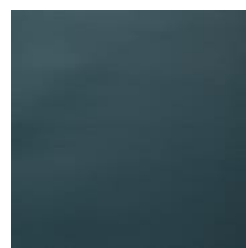
Baresque Chamois



Baresque Chamois



Baresque Chamois



Baresque Chamois

ATOMIK LARGE MOON OTTOMAN

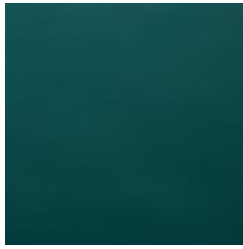
Seating » Ottomans

Upholstery Fabric
Molten



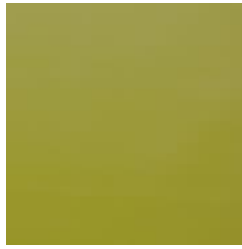
Baresque Chamois
Upholstery Fabric
Paradise

Upholstery Fabric
Black



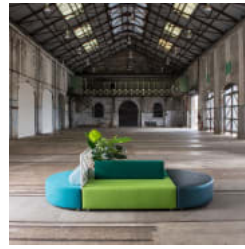
Baresque Chamois
Upholstery Fabric
Mallard

Upholstery Fabric
Navy



Baresque Chamois
Upholstery Fabric
Sassafrass

Upholstery Fabric
Indigo



Upholstery Fabric
Cerulean



ATOMIK LARGE MOON OTTOMAN

Seating » Ottomans

Modern, modular, large moon ottoman design. Mix and match upholstery fabrics and configurations to create a range of custom seating options.

Description The Atomik large moon ottoman forms part of the Atomik modular seating collection that offers a mix of upholstered ottomans and lounge seats together with planters, tables, and screens in a range of 13 geometric shapes. With flexibility and versatility in mind, multiple configurations of mixed-use pods can be created to suit small or large spaces. Together with a wide range of finishes, Atomik can be tailored to suit specific interior project requirements for use in shopping centres, hospitality, office break-out areas, commercial lobbies, universities, and schools.

Made In Australia

Dimensions 1700mmW x 850mmD x 450mmH
Radius: R425mm
Optional backrest H: 350mm
Overall height with backrest: 800mm
Optional bolster H: 250mm
Overall height with backrest: 700mm

Frame Internal Frame
Medium Density Fibreboard (MDF)
Steel legs elevate the upholstered form off the ground.

Fabric Amount Required 3.5m - based on one plain fabric 137cm wide.
Optional Backrests
BR1 700mmL Short backrest: 0.8mtrs
BR2 1400mmL Long backrest: 1.5mtrs
BO1 700mmL Short bolster: 0.8mtrs
BO2 1400mmL Long bolster: 1.5mtrs
Optional Arm
Armrest - 0.8mtrs each

ATOMIK LARGE MOON OTTOMAN

Seating » Ottomans

Finishes

Upholstery Fabrics

Specify a [Baresque upholstery fabric](#) or supply your own to be approved by us to ensure it is fit for purpose.

[Baresque](#)

[Chamois](#): Espresso, Truffle, Mahogany, Cappuccino, Cognac, Luggage, Camel, Storm, Antelope, Elephant, Cashew, Fawn, Bone, Fog, Pewter, Patina, Charcoal, Cinnamon, Bordeaux, Salsa, Molten, Black, Navy, Indigo, Cerulean, Paradise, Mallard, Sassafrass

A wider selection of materials + finishes is available.

Sustainability

Recycled Materials

We locally source our steel. It means we know it uses recycled content and is 100% recyclable.

Warranty

2-year warranty. View the [warranty](#) for more details.

Lead Time

6-8 weeks

Assembly & Delivery

Assembly

Some simple assembly is required (by others) to connect modules - brackets fitted to the underside simply need to be turned and modules pushed together. See brochure for details. Backrests and arms are pre-fitted to the ottomans. A drawing will be supplied with the recommended connection order.

Delivery

Atomik is delivered to site in modules by furniture removalists.

Fixing Detail

Freestanding only - loose on glides.
Modules are fixed together by ratchet connectors.

How to Specify

Select your configuration or create your own
Select your fit for purpose upholstery fabric

ATOMIK LARGE MOON OTTOMAN

Seating » Ottomans

Care Instructions

Baresque Upholstery Fabrics

Use a cloth with any of the following in preferred order of use:

1. Clear warm water
2. Mild solution of liquid detergent and warm water
3. Isopropyl Alcohol (rubbing alcohol)

Remove any detergent with a clean, damp cloth. Gently pat dry.

For more difficult stains, dampen a soft white cloth with a solution of household bleach (mix 10% bleach with 90% water). Rub gently. Rinse with a water dampened cloth to remove bleach concentration.

Do not use solvent based or concentrated abrasive cleaning agents, lacquer thinners or nail polish remover as these may cause discolouration over a period of time.

Always test in an inconspicuous area first.

Customisable

Atomik is made locally and can be tailored to suit your interior project. Select from a range of table top finishes such as Corian®, engineered stone and digital print on a variety of substrates, as well as custom screen perforations or custom metallic powder-coats and much more.

Botton + Gardiner can assist you with configuring your layouts. 2D or 3D drawings or kits of the modules are available.

Optional GPOs can be added to the modular pods to power them up as charging or working stations.

Additional Comments

Commercial-grade foam is used for padding and comfort.
