

STONE BENCH

Seating » Benches

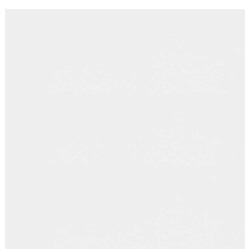


Collection: **Metalco**

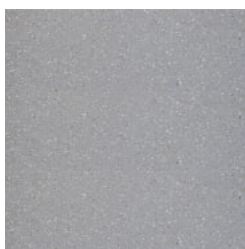
Designed by: **Raffaele Lazzari**

STONE BENCH

Seating » Benches



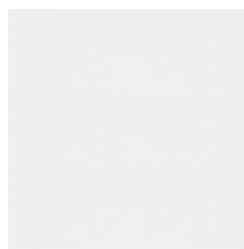
Precast Concrete
White Polished



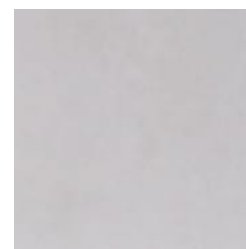
Precast Concrete
Grey Polished



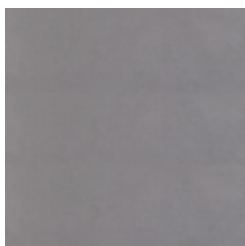
Precast Concrete
Dark Grey Polished



Precast Concrete
White Velluto Natural
Smooth



Precast Concrete
Grey Velluto Natural
Smooth



Precast Concrete
Dark Grey Velluto
Natural Smooth



STONE BENCH

Seating » Benches

Multi-purpose free-form monolithic seating. Organic-shaped, pebble-like form in precast concrete with a granite aggregate to suit many environments.

Description Featuring a pebble-like, monolithic concrete form, Stone, designed by Raffaele Lazzari, is ideal for students to clamber over, lounge across, or perch on to eat. The enlarged scale adds an element of fun and plays with the imagination, perfect for a learning environment, whilst the softened curved form ensures there are no pointed corners for children to run into. Available in 3 sizes, Stone is made of precast concrete with stone aggregate in white, grey or dark grey colours for different looks. The smaller scale cousin of Moonstone is also ideally priced for smaller projects with less budget looking for a similar look.

Made In Europe

Dimensions

Stone S
1110mmW x 780mmD x 395mmH

Stone M
1570mmW x 1185mmD x 470mmH

Stone L
1960mmW x 1520mmD x 510mmH

Weight

Stone S
High Performance Concrete (HPC): 338 kg

Stone M
High Performance Concrete (HPC): 755 kg

Stone L
High Performance Concrete (HPC): 1185 kg
Ultra High Performance Concrete (UHPC): 430 kg

Frame

Body
Precast high performance concrete (HPC) with stone aggregate
3 colours: White, Grey, Dark Grey

Optional: GRC - Glass-fibre reinforced concrete

Body Finish
Velluto: natural smooth finish

Optional
Clear anti-graffiti coating

Warranty 5-year warranty. View the [warranty](#) for more details.

STONE BENCH

Seating » Benches

Lead Time 12+ weeks.

Assembly & Delivery Product supplied packed on pallets.
Lifting equipment required for receipt and placement of concrete product (by others).
Supplied with ferrules, eyebolts and caps.

Fixing Detail Freestanding or fixed by others via threaded rod (supplied).

How to Specify Check your project can accommodate the minimum order quantity of this item
Select your finish
Select your fixing type

Care Instructions Precast Concrete
Cleaning
Remove any loose surface deposits with a brush.

Regularly wash the coating using a solution of warm water and non-abrasive, pH neutral detergent solution (with low wax content).

Thoroughly rinse the surfaces after cleaning to remove all residues. You can use a sponge, a soft bristle brush or pressure water cleaners. For pressure cleaners ensure you use cold or warm water and average pressure. Rinse after with fresh water and leave to dry.

Do not use abrasive sponges, discs, or brushes.

Do not use corrosive detergents, descaling agents, or acidic components (bleach, ammonia, vinegar, abrasive pastes).

For cleaning marks or solidified substances from the surface use slightly abrasive sponges for non-stick ceramic pans, accurately and lightly treat the parts to be cleaned as above. Please check with Botton + Gardiner for advice relating to cleaning special circumstances (i.e. stains from paint, acid, etc.) as required.

Maintenance
For surfaces prone to additional wear like that used for street furniture, regular treatment is recommended (at least every 2 years) with products containing high wax content. Evenly apply the product with a soft cloth and polish with a circular motion.

Avoid the products from being placed on surfaces subject to infiltrations or stagnant water puddles.

STONE BENCH

Seating » Benches

Additional Comments

Options

Upon request, when technically feasible, it is possible to perform polishing operations.

The finished products are treated with a protective varnish, and upon request, anti-graffiti treatment can also be applied.

This item can be ordered in a GRC - glass reinforced concrete finish for projects where weight is a concern for flooring surfaces or internal use (additional cost applies) and standard colours available.
