

NOOSA BIN

Bins » Bin Housings



Designed by: **Botton + Gardiner**

NOOSA BIN

Bins » Bin Housings



Hardwood Blackbutt
UV-Resistant Oil



Hardwood Spotted
Gum UV-Resistant
Oil



Hardwood Merbau
UV-Resistant Oil



Hardwood Mixed Red
UV-Resistant Oil Pine



Hardwood Mixed Red
UV-Resistant Oil
Mahogany



Hardwood Mixed Red
UV-Resistant Oil
Ebony



Duraslat™ XG Ravine



Duraslat™ XG Cave



Duraslat™ XG Alcove



Duraslat™ XG
Boulder



Duraslat™ XG Dune



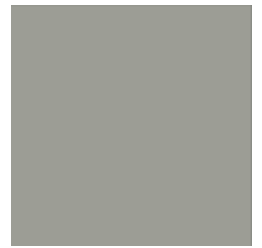
Core Powder-Coat
White Satin



Core Powder-Coat
Black Satin



Core Powder-Coat
Charcoal Satin



Core Powder-Coat
Palladium Silver Satin



Core Powder-Coat
Matt Black Matt



Core Powder-Coat
Pearl White Gloss



Solid Powder-Coat
Coffee Satin



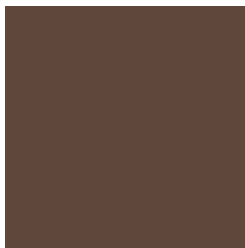
Solid Powder-Coat
Cove Satin



Solid Powder-Coat
Monument Matt



Solid Powder-Coat
Medium Bronze
Kinetic Flat



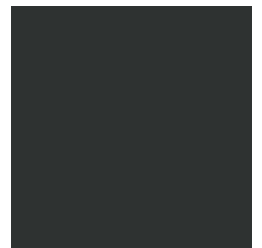
Textured Powder-
Coat Core Ten
Textured Metallic



Textured Powder-
Coat Asteroid
Textured Metallic



Textured Powder-
Coat Bass Textured
Metallic



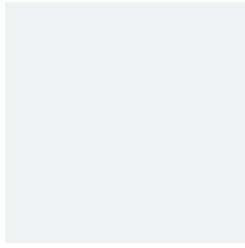
Textured Powder-
Coat Textura Black

NOOSA BIN

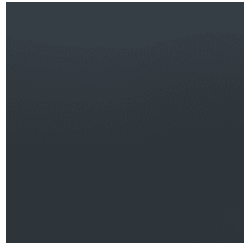
Bins » Bin Housings



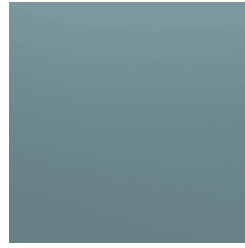
Textured Powder-Coat Textura Monument



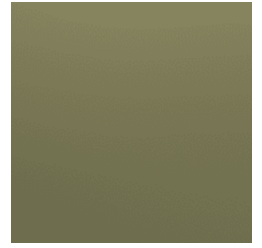
Textured Powder-Coat Textura White



Signature Powder-Coat Deep Ocean Satin



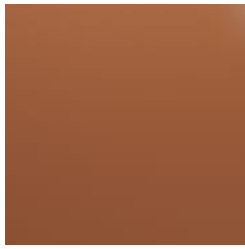
Signature Powder-Coat Wedgewood Satin



Signature Powder-Coat Mangrove Satin



Signature Powder-Coat Territory Red Satin



Signature Powder-Coat Claypot Satin



Signature Powder-Coat Paperbark Satin



Bold Powder-Coat Bondi Blue Gloss



Bold Powder-Coat Leaf Satin



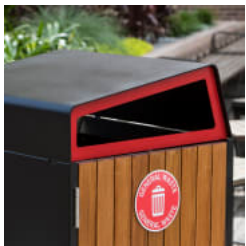
Bold Powder-Coat Sensation Gloss



Bold Powder-Coat Lobster Satin



Bold Powder-Coat Moonlight Satin



NOOSA BIN

Bins » Bin Housings



NOOSA BIN

Bins » Bin Housings

Contemporary outdoor bin housing with 3 hood styles. Concealed hardware means clean lines. Panels in hardwood, Duraslat™ XG and powder-coat finishes.

Description Noosa is the ultimate chameleon. Simple and contemporary, the no-fuss bin body can be dressed up with 3 hood styles, bold-coloured general waste or recycling limiters, textured or metallic powder-coats, and fun feature panels. Concealed hardware gives Noosa its smooth attitude, and ensures it's easy to clean down. Noosa can be a single bin housing or be paired together. This is style that won't break the bank, so you can get on with your job.

Made In Australia

Dimensions

120L
Taper
635mmW x 675mmD x 1200mmH

Lean
635mmW x 675mmD x 1230mmH

Skillion
635mmW x 675mmD x 1210mmH

240L
Taper
735mmW x 855mmD x 1330mmH

Lean
735mmW x 855mmD x 1360mmH

Skillion
735mmW x 855mmD x 1340mmH

Capacity

120L
Single
1 x 120L wheelie bin

240L
Single
1x 240L wheelie bin

Wheelie bin not included - available on request.

Frame Internal stainless steel frame and powder-coated galvanised steel body.

NOOSA BIN

Bins » Bin Housings

Powder Coat

Core

White (satin), Black (satin), Charcoal (satin), Palladium Silver (satin), Matt Black (matt), Pearl White (gloss)

Solid

Coffee (satin), Cove (satin), Monument (matt), Medium Bronze Kinetic (flat)

Textured

Core Ten (textured metallic), Asteroid (textured metallic), Bass (textured metallic), Textura Black (textured), Textura Monument (textured), Textura White (textured)

Signature

Deep Ocean (satin), Wedgewood (satin), Mangrove (satin), Territory Red (matt), Claypot (satin), Paperbark (satin)

Bold

Bondi Blue (gloss), Leaf (satin), Sensation (gloss), Lobster (satin), Moonlight (satin)

Signage

Round vinyl decal signage on the door panel.

Finishes

Hood

Powder-coated aluminium

Internal Frame

Stainless steel

Feature Panel

Cut-out designs (perforation patterns): Horizon, Rain

Hardwood: Blackbutt, Spotted Gum, Mixed Red - Pine, Mahogany, Ebony Oil

Duraslat™ XG: Ravine, Cave, Alcove, Boulder, Dune

Note: when hardwood or Duraslat™ XG battens are used on the front feature panel, the back panel of the bin will feature the Rain perforation.

Body Panels + Chute

Powder-coated galvanised steel

Powder-Coat Colours

Standard or custom specified colour

Fittings

Compression lock prevents door rattling

Signage: round vinyl decal to door

NOOSA BIN

Bins » Bin Housings

Sustainability

Certified Hardwood

All hardwood is sourced from sustainable forests certified by the Program for the Endorsement of Forest Certification (PEFC), the world's largest forestry certification system.

Recycled Materials

We locally source our steel and aluminium. It means we know it uses recycled content and is 100% recyclable.

Duraslat™ XG is made from 90% of recycled hardwood fibres and reclaimed plastic materials, which reduces demand for virgin materials.

Low Pollutants

Our powder-coating process doesn't emit Volatile Organic Compounds (VOCs) and has Environmental Product Declarations (EPDs).

Warranty

5-year warranty. View the [warranty](#) for more details.

Lead Time

6-8 weeks

Assembly & Delivery

Shipped fully assembled on pallets.

Fixing Detail

Surface fixed by others. Anchors not included.

How to Specify

Select your wheelie bin capacity - 120L or 240L
Select your hood - Taper, Lean, or Skillion
Add limiters (Taper or Lean) - general waste or recycling
Select your feature panel finish
Select your feature panel colour
Select your body powder-coat colour
Select your hood powder-coat colour
Select your vinyl decal - general waste or recycling

NOOSA BIN

Bins » Bin Housings

Care Instructions

Hardwood

Cleaning

Remove any loose surface deposits with a soft bristled brush and wipe down with fresh water and a non-abrasive cloth.

Oiling

Oiling of timber will postpone natural greying, repel moisture, improve mould resistance, help maintain a smooth surface texture and enhance the grain and colour.

To maintain, lightly sand rough areas of timber and brush on one coat of timber decking oil every 6 months or as required.

Duraslat™ XG

Cleaning

Simply wash down occasionally. Do not use high pressure cleaners.

Powder-Coat

Cleaning

Carefully remove any loose surface deposits with a wet sponge or soft bristled brush.

Use a soft (non-abrasive) cloth or brush and a diluted solution of mild detergent and warm water.

Ensure surfaces are thoroughly rinsed with clean fresh water after cleaning to remove all residues.

Never use thinners, abrasive cleaning agents, alcohol-based, acid or alkali cleaning agents.

Customisable

The Noosa bin is locally made and customisable to suit your requirements.

NOOSA BIN

Bins » Bin Housings

Additional Comments

Options

3 hood styles to select from - Taper, Lean or Skillion.

Bold coloured limiters for general waste (red) or recycling (yellow) can be added to Taper and Lean.

Skillion hoods can be powder-coated in custom colours to identify between general waste (red) and recycling (yellow) on request (set up fees apply).

Additional Info

The array of hoods, finishes and colour options makes Noosa the ultimate chameleon, transforming into the perfect project fit.

Compression lock tightens with a turn of the key and prevents rattling noise for peaceful streets.

Perforation designs are child safe, conforming to AS4685.1 finger entrapment guidelines on play equipment.

Heavy duty butt hinges will keep your doors level and issue free throughout the life of the bin.
