

# PROSPECT TRUSS SEAT

Seating » Seats



Collection: **Prospect**

Designed by: **Botton + Gardiner**

# PROSPECT TRUSS SEAT

Seating » Seats



Hardwood Blackbutt  
UV-Resistant Oil



Hardwood Spotted  
Gum UV-Resistant  
Oil



Hardwood Merbau  
UV-Resistant Oil



Hardwood Mixed Red  
UV-Resistant Oil Pine



Hardwood Mixed Red  
UV-Resistant Oil  
Mahogany



Hardwood Mixed Red  
UV-Resistant Oil  
Ebony



Duraslat™ XG Ravine



Duraslat™ XG Cave



Duraslat™ XG Alcove



Duraslat™ XG  
Boulder



Duraslat™ XG Dune



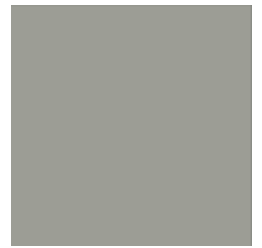
Core Powder-Coat  
White Satin



Core Powder-Coat  
Black Satin



Core Powder-Coat  
Charcoal Satin



Core Powder-Coat  
Palladium Silver Satin



Core Powder-Coat  
Matt Black Matt



Core Powder-Coat  
Pearl White Gloss



Solid Powder-Coat  
Coffee Satin



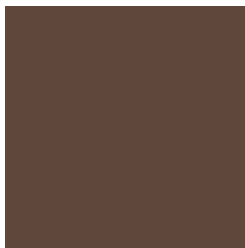
Solid Powder-Coat  
Cove Satin



Solid Powder-Coat  
Monument Matt



Solid Powder-Coat  
Medium Bronze  
Kinetic Flat



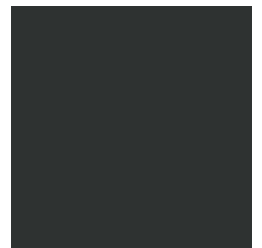
Textured Powder-  
Coat Core Ten  
Textured Metallic



Textured Powder-  
Coat Asteroid  
Textured Metallic



Textured Powder-  
Coat Bass Textured  
Metallic



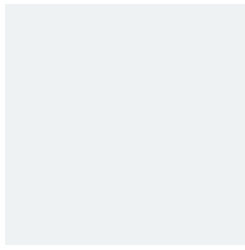
Textured Powder-  
Coat Textura Black

# PROSPECT TRUSS SEAT

Seating » Seats



Textured Powder-Coat Textura Monument



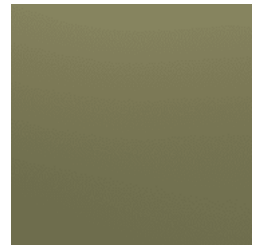
Textured Powder-Coat Textura White



Signature Powder-Coat Deep Ocean Satin



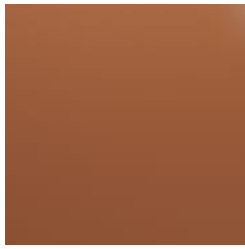
Signature Powder-Coat Wedgewood Satin



Signature Powder-Coat Mangrove Satin



Signature Powder-Coat Territory Red Satin



Signature Powder-Coat Claypot Satin



Signature Powder-Coat Paperbark Satin



Bold Powder-Coat Bondi Blue Gloss



Bold Powder-Coat Leaf Satin



Bold Powder-Coat Sensation Gloss



Bold Powder-Coat Lobster Satin



Bold Powder-Coat Moonlight Satin



# PROSPECT TRUSS SEAT

Seating » Seats

---

Robust truss seat design. Battens in 5 hardwood and 5 Duraslat™ XG colours and an asymmetrical steel frame in 27 powder-coat or galvanised finishes.

---

**Description**                      Featuring striking asymmetrical forms and robust materials that are based on our competition-winning designs for the Western Sydney Parklands Trust, the Prospect truss seat is ideal for parkland and urban environments. The functional and light appearance of the truss seat features an asymmetrical steel frame that grounds the design. Finishes include 5 hardwood or 5 Duraslat™ XG batten colours and 27 powder-coat finishes or a galvanised finish to suit many outdoor spaces.

---

**Made In**                              Australia

---

**Dimensions**                      Hardwood  
1600mmW x 540mmD x 770mmH

   Duraslat™ XG  
1600mmW x 540mmD x 770mmH

   Seat height: 445mm  
   Half back option: 1050mm long

---

**Batten Type**                      Hardwood  
Blackbutt, Spotted Gum, Mixed Red -  
Pine, Mahogany, Ebony Oil

   Duraslat™ XG  
Ravine, Cave, Alcove, Boulder, Dune

---

**Frame**                                      Hot-dip galvanised or powder-coated steel

---

# PROSPECT TRUSS SEAT

Seating » Seats

---

## Powder Coat

### Core

White (satin), Black (satin), Charcoal (satin), Palladium Silver (satin), Matt Black (matt), Pearl White (gloss)

### Solid

Coffee (satin), Cove (satin), Monument (matt), Medium Bronze Kinetic (flat)

### Textured

Core Ten (textured metallic), Asteroid (textured metallic), Bass (textured metallic), Textura Black (textured), Textura Monument (textured), Textura White (textured)

### Signature

Deep Ocean (satin), Wedgewood (satin), Mangrove (satin), Territory Red (matt), Claypot (satin), Paperbark (satin)

### Bold

Bondi Blue (gloss), Leaf (satin), Sensation (gloss), Lobster (satin), Moonlight (satin)

---

## Sustainability

### Certified Hardwood

All hardwood is sourced from sustainable forests certified by the Program for the Endorsement of Forest Certification (PEFC), the world's largest forestry certification system.

### Recycled Materials

We locally source our steel. It means we know it uses recycled content and is 100% recyclable.

Duraslat™ XG is made from 90% of recycled hardwood fibres and reclaimed plastic materials, which reduces demand for virgin materials.

### Low Pollutants

Our powder-coating process doesn't emit Volatile Organic Compounds (VOCs) and has Environmental Product Declarations (EPDs).

---

## Warranty

5-year warranty. View the [warranty](#) for more details.

---

## Lead Time

6-8 weeks

---

## Assembly & Delivery

Shipped fully assembled on pallets.

---

## Fixing Detail

Surface or sub-surface fixed by others. Anchors not included.

---

# PROSPECT TRUSS SEAT

Seating » Seats

---

## How to Specify

Select your cantilever orientation  
Select your backrest length  
Select your batten finish  
Select your frame finish

---

## Care Instructions

### Hardwood

#### Cleaning

Remove any loose surface deposits with a soft bristled brush and wipe down with fresh water and a non-abrasive cloth.

#### Oiling

Oiling of timber will postpone natural greying, repel moisture, improve mould resistance, help maintain a smooth surface texture and enhance the grain and colour.

To maintain, lightly sand rough areas of timber and brush on one coat of timber decking oil every 6 months or as required.

### Duraslat™ XG

#### Cleaning

Simply wash down occasionally. Do not use high pressure cleaners.

### Powder-Coat

#### Cleaning

Carefully remove any loose surface deposits with a wet sponge or soft bristled brush.

Use a soft (non-abrasive) cloth or brush and a diluted solution of mild detergent and warm water.

Ensure surfaces are thoroughly rinsed with clean fresh water after cleaning to remove all residues.

Never use thinners, abrasive cleaning agents, alcohol-based, acid or alkali cleaning agents.

---

## Additional Comments

Options: left or right-hand cantilever (when seated), optional armrests, and a partial or full backrest.

---