

PROSPECT BIN CORRAL

Bins » Bin Housings



Collection: **Prospect**

Designed by: **Botton + Gardiner**

PROSPECT BIN CORRAL

Bins » Bin Housings



Duraslat™ XG Ravine



Duraslat™ XG Cave



Duraslat™ XG Alcove



Duraslat™ XG
Boulder



Duraslat™ XG Dune



Hot-Dip Galvanised
Steel



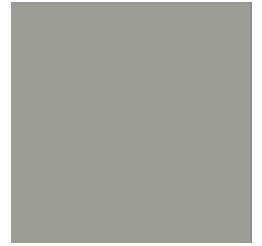
Core Powder-Coat
White Satin



Core Powder-Coat
Black Satin



Core Powder-Coat
Charcoal Satin



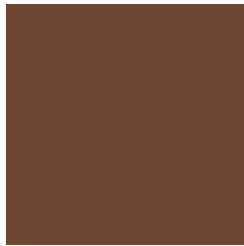
Core Powder-Coat
Palladium Silver Satin



Core Powder-Coat
Matt Black Matt



Core Powder-Coat
Pearl White Gloss



Solid Powder-Coat
Coffee Satin



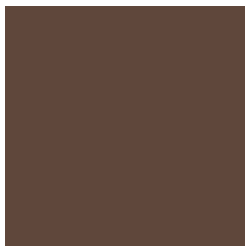
Solid Powder-Coat
Cove Satin



Solid Powder-Coat
Monument Matt



Solid Powder-Coat
Medium Bronze
Kinetic Flat



Textured Powder-
Coat Core Ten
Textured Metallic



Textured Powder-
Coat Asteroid
Textured Metallic



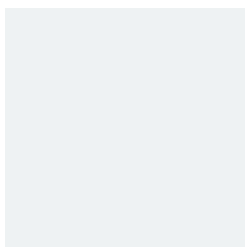
Textured Powder-
Coat Bass Textured
Metallic



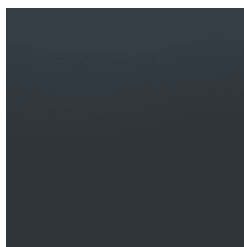
Textured Powder-
Coat Textura Black



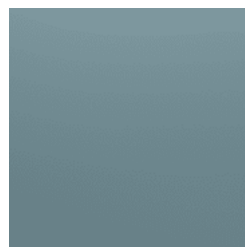
Textured Powder-
Coat Textura
Monument



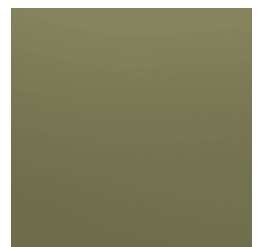
Textured Powder-
Coat Textura White



Signature Powder-
Coat Deep Ocean
Satin



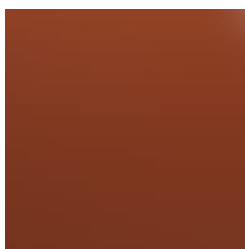
Signature Powder-
Coat Wedgewood
Satin



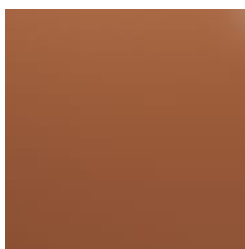
Signature Powder-
Coat Mangrove Satin

PROSPECT BIN CORRAL

Bins » Bin Housings



Signature Powder-Coat Territory Red Satin



Signature Powder-Coat Claypot Satin



Signature Powder-Coat Paperbark Satin



Bold Powder-Coat Bondi Blue Gloss



Bold Powder-Coat Leaf Satin



Bold Powder-Coat Sensation Gloss



Bold Powder-Coat Lobster Satin



Bold Powder-Coat Moonlight Satin



PROSPECT BIN CORRAL

Bins » Bin Housings

Robust double or triple wheelie bin enclosure ideal for parklands. Galvanised or powder-coated steel frame with 5 Duraslat™ XG batten finishes.

Description	With robust materials and striking asymmetrical corner details, the Prospect bin corral provides a wheelie bin enclosure with large capacity to handle anything you can throw at it. The bin housing restricts the size of waste that is deposited and is ideal for parklands and streetscapes with minimal supervision in remote areas. Galvanised or powder-coated steel frame in 27 colours with 5 Duraslat™ XG batten finishes.
Made In	Australia
Dimensions	<u>240L</u> Double 1680mmW x 1175mmD x 1210mmH Triple 2390mmW x 1175mmD x 1210mmH
Capacity	240L wheelie bin Wheelie bins not supplied - optional inclusion on request.
Batten Type	Duraslat™ XG Ravine, Cave, Alcove, Boulder, Dune
Frame	Hot-dip galvanised or powder-coated steel
Powder Coat	Core White (satin), Black (satin), Charcoal (satin), Palladium Silver (satin), Matt Black (matt), Pearl White (gloss) Solid Coffee (satin), Cove (satin), Monument (matt), Medium Bronze Kinetic (flat) Textured Core Ten (textured metallic), Asteroid (textured metallic), Bass (textured metallic), Textura Black (textured), Textura Monument (textured), Textura White (textured) Signature Deep Ocean (satin), Wedgewood (satin), Mangrove (satin), Territory Red (matt), Claypot (satin), Paperbark (satin) Bold Bondi Blue (gloss), Leaf (satin), Sensation (gloss), Lobster (satin), Moonlight (satin)

PROSPECT BIN CORRAL

Bins » Bin Housings

Signage Optional vinyl signage can be added on request.

Sustainability

Recycled Materials
We locally source our steel. It means we know it uses recycled content and is 100% recyclable.

Duraslat™ XG is made from 90% of recycled hardwood fibres and reclaimed plastic materials, which reduces demand for virgin materials.

Low Pollutants
Our powder-coating process doesn't emit Volatile Organic Compounds (VOCs) and has Environmental Product Declarations (EPDs).

Warranty 5-year warranty. View the [warranty](#) for more details.

Lead Time 6-8 weeks

Assembly & Delivery This item comes delivered in parts and the assembly is part of the installation process. Instructions are supplied.

Fixing Detail Surface fixed by others. Anchors not included.

How to Specify

- Select your capacity - double, triple
- Select your batten finish
- Select your frame finish
- Select your door opening orientation
- Select any optional extras

PROSPECT BIN CORRAL

Bins » Bin Housings

Care Instructions

Duraslat™ XG

Simply wash down occasionally. Do not use high pressure cleaners.

Powder-Coat

Carefully remove any loose surface deposits with a wet sponge or soft bristled brush.

Use a soft (non-abrasive) cloth or brush and a diluted solution of mild detergent and warm water.

Ensure surfaces are thoroughly rinsed with clean fresh water after cleaning to remove all residues.

Never use thinners, abrasive cleaning agents, alcohol-based, acid or alkali cleaning agents.

Hot-Dip Galvanised Steel

For general cleaning of bulk contaminants such as dirt and the like, ordinary laundry soaps can be satisfactorily used.

For more stubborn or larger areas, the use of a low-pressure wash (eg. a gurney gun) with just pure water or in conjunction with proprietary cleaning materials, such as car wash or truck wash, can be effective. It is important that the steel be washed down with fresh water after cleaning.

The cleaning treatment of the galvanising should be conservative at first and then if the situation demands, the treatment can become steadily more aggressive. Also, wherever some form of mechanical abrasion or “scrubbing” is required, the use of a hard, plastic bristle brush is recommended. Steel bristle brushes are not to be used since they will cause discolouration.

Mechanical methods of cleaning zinc surfaces can cause aesthetic issues. The “cleaned” areas are likely to contrast with adjacent untreated surfaces and may take a significant period of time to weather to a uniform colour. If aesthetics is a large concern, it is advisable to first test the cleaning method in an inconspicuous area in case the aesthetic effect is unappealing.

Customisable

The Prospect bin corral is locally made and customisable to suit your requirements.

Additional Comments

Doors can open to the front or rear of the units depending on the best access for your location.

Compression lock prevents door rattling.
