

VERGE CURVED BENCH

Seating » Benches



Collection: **Verge**

Designed by: **Botton + Gardiner**

VERGE CURVED BENCH

Seating » Benches



Hardwood Blackbutt
UV-Resistant Oil



Hardwood Spotted
Gum UV-Resistant
Oil



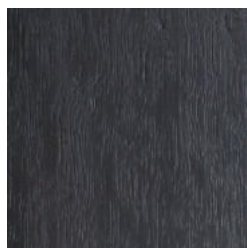
Hardwood Merbau
UV-Resistant Oil



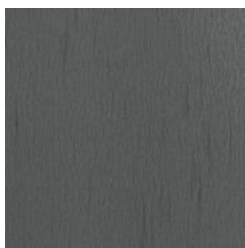
Hardwood Mixed Red
UV-Resistant Oil Pine



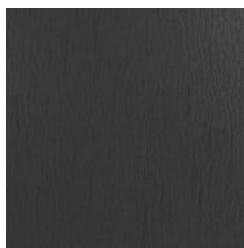
Hardwood Mixed Red
UV-Resistant Oil
Mahogany



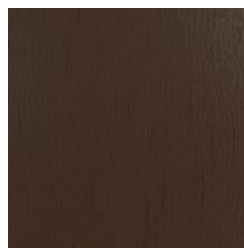
Hardwood Mixed Red
UV-Resistant Oil
Ebony



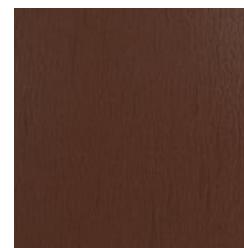
Duraslat™ XG Ravine



Duraslat™ XG Cave



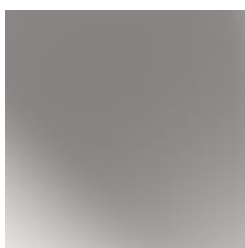
Duraslat™ XG Alcove



Duraslat™ XG
Boulder



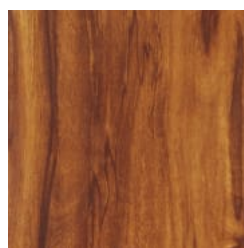
Duraslat™ XG Dune



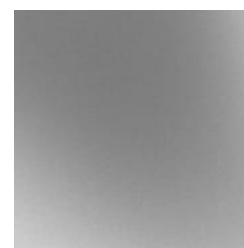
Clear Anodised
Aluminium



Alugrain Driftwood



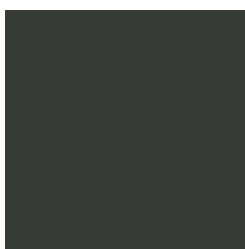
Alugrain Spotted
Gum



Hot-Dip Galvanised
Steel



Core Powder-Coat
White Satin



Core Powder-Coat
Black Satin



Core Powder-Coat
Charcoal Satin



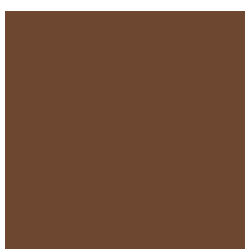
Core Powder-Coat
Palladium Silver Satin



Core Powder-Coat
Matt Black Matt



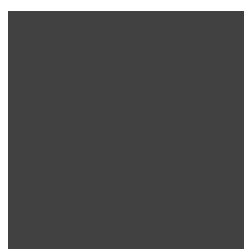
Core Powder-Coat
Pearl White Gloss



Solid Powder-Coat
Coffee Satin



Solid Powder-Coat
Cove Satin



Solid Powder-Coat
Monument Matt



Solid Powder-Coat
Medium Bronze
Kinetic Flat

VERGE CURVED BENCH

Seating » Benches



Textured Powder-Coat Core Ten
Textured Metallic



Textured Powder-Coat Asteroid
Textured Metallic



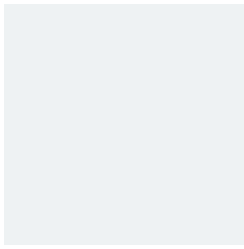
Textured Powder-Coat Bass Textured
Metallic



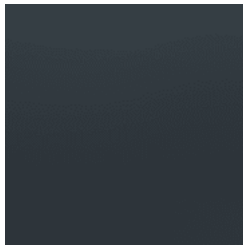
Textured Powder-Coat Textura Black



Textured Powder-Coat Textura
Monument



Textured Powder-Coat Textura White



Signature Powder-Coat Deep Ocean
Satin



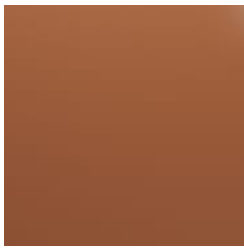
Signature Powder-Coat Wedgewood
Satin



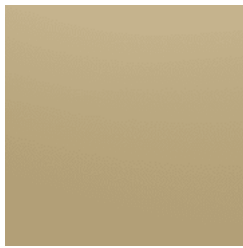
Signature Powder-Coat Mangrove Satin



Signature Powder-Coat Territory Red
Satin



Signature Powder-Coat Claypot Satin



Signature Powder-Coat Paperbark Satin



Bold Powder-Coat Bondi Blue Gloss



Bold Powder-Coat Leaf Satin



Bold Powder-Coat Sensation Gloss



Bold Powder-Coat Lobster Satin

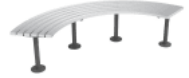


Bold Powder-Coat Moonlight Satin



VERGE CURVED BENCH

Seating » Benches



VERGE CURVED BENCH

Seating » Benches

Simple, durable curved bench. Hardwood, Duraslat™ XG, aluminium battens with steel posts and base plates in 27 powder-coat or galvanised finishes.

Description The Verge curved bench is a simple, modular, highly durable design. Hardwood, Duraslat™ XG, aluminium battens work with cylindrical steel posts and circular base plates to add a functional and utilitarian feel to spaces you know are going to get their fair share of wear and tear. The modularity allows for snaking curve, full ring or shallow bend configurations to be created to break up linear spaces. It is ideal for seating around trees, along curved garden beds and walls. Finishes include 5 hardwood or 5 Duraslat™ XG colours and 27 powder-coat finishes or a galvanised finish.

Made In Australia

Dimensions Standard Arc Lengths
Hardwood: 2000mm
Duraslat™ XG: 2000mm
Aluminium: 2000mm

Seat height: 455mm
Seat depth: 440mm
**Radius as specified - minimum outer radius possible is 1000mm

Batten Type Hardwood
Blackbutt, Spotted Gum, Mixed Red -
Pine, Mahogany, Ebony Oil

Duraslat™ XG
Ravine, Cave, Alcove, Boulder, Dune

Aluminium | Alugrain
Clear Anodised, Driftwood, Spotted Gum

Frame Hot-dip galvanised or powder-coated steel

VERGE CURVED BENCH

Seating » Benches

Powder Coat

Core

White (satin), Black (satin), Charcoal (satin), Palladium Silver (satin), Matt Black (matt), Pearl White (gloss)

Solid

Coffee (satin), Cove (satin), Monument (matt), Medium Bronze Kinetic (flat)

Textured

Core Ten (textured metallic), Asteroid (textured metallic), Bass (textured metallic), Textura Black (textured), Textura Monument (textured), Textura White (textured)

Signature

Deep Ocean (satin), Wedgewood (satin), Mangrove (satin), Territory Red (matt), Claypot (satin), Paperbark (satin)

Bold

Bondi Blue (gloss), Leaf (satin), Sensation (gloss), Lobster (satin), Moonlight (satin)

Sustainability

Certified Hardwood

All hardwood is sourced from sustainable forests certified by the Program for the Endorsement of Forest Certification (PEFC), the world's largest forestry certification system.

Recycled Materials

We locally source our steel. It means we know it uses recycled content and is 100% recyclable.

Duraslat™ XG is made from 90% of recycled hardwood fibres and reclaimed plastic materials, which reduces demand for virgin materials.

Low Pollutants

Our powder-coating process doesn't emit Volatile Organic Compounds (VOCs) and has Environmental Product Declarations (EPDs).

Warranty

5-year warranty. View the [warranty](#) for more details.

Lead Time

6-8 weeks

Assembly & Delivery

Shipped fully assembled on pallets.

Fixing Detail

Post fixed by others - surface fixed or core-holed. Anchors not included.

VERGE CURVED BENCH

Seating » Benches

How to Specify

Select your arc length
Specify your radius
Select your batten finish
Select your frame finish
Select your fixing type

Care Instructions

Hardwood

Cleaning

Remove any loose surface deposits with a soft bristled brush and wipe down with fresh water and a non-abrasive cloth.

Oiling

Oiling of timber will postpone natural greying, repel moisture, improve mould resistance, help maintain a smooth surface texture and enhance the grain and colour.

To maintain, lightly sand rough areas of timber and brush on one coat of timber decking oil every 6 months or as required.

Duraslat™ XG

Cleaning

Simply wash down occasionally. Do not use high pressure cleaners.

Powder-Coat

Cleaning

Carefully remove any loose surface deposits with a wet sponge or soft bristled brush.

Use a soft (non-abrasive) cloth or brush and a diluted solution of mild detergent and warm water.

Ensure surfaces are thoroughly rinsed with clean fresh water after cleaning to remove all residues.

Never use thinners, abrasive cleaning agents, alcohol-based, acid or alkali cleaning agents.

Additional Comments

Curved benches are made to order to your specified radius and arc length. Drawings are issued for sign off prior to manufacture.
