

URBAN TRI TABLE AS1428.2

Tables » Dining Height Tables



Collection: **Urban**

Designed by: **Botton + Gardiner**

URBAN TRI TABLE AS1428.2

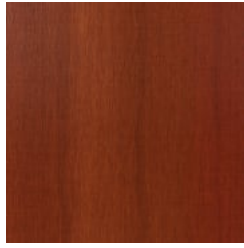
Tables » Dining Height Tables



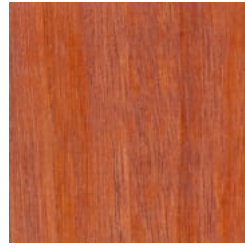
Hardwood Blackbutt
UV-Resistant Oil



Hardwood Spotted
Gum UV-Resistant
Oil



Hardwood Merbau
UV-Resistant Oil



Hardwood Mixed Red
UV-Resistant Oil
Clear



Hardwood Mixed Red
UV-Resistant Oil
Mahogany



Hardwood Mixed Red
UV-Resistant Oil
Ebony



Duraslat™ XG Ravine



Duraslat™ XG Cave



Duraslat™ XG Alcove



Duraslat™ XG
Boulder



Duraslat™ XG Dune



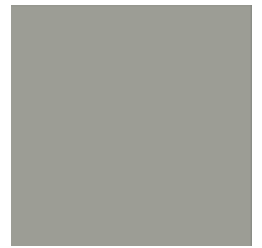
Core Powder-Coat
White Satin



Core Powder-Coat
Black Satin



Core Powder-Coat
Charcoal Satin



Core Powder-Coat
Palladium Silver Satin



Core Powder-Coat
Matt Black Matt



Core Powder-Coat
Pearl White Gloss



Solid Powder-Coat
Coffee Satin



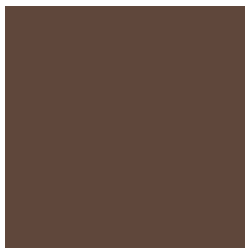
Solid Powder-Coat
Cove Satin



Solid Powder-Coat
Monument Matt



Solid Powder-Coat
Medium Bronze
Kinetic Flat



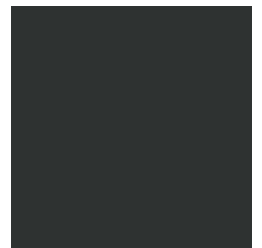
Textured Powder-
Coat Core Ten
Textured Metallic



Textured Powder-
Coat Asteroid
Textured Metallic



Textured Powder-
Coat Bass Textured
Metallic



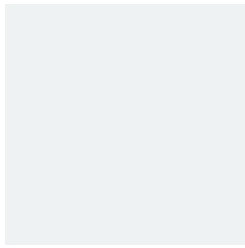
Textured Powder-
Coat Textura Black

URBAN TRI TABLE AS1428.2

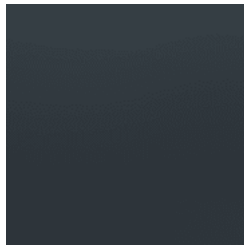
Tables » Dining Height Tables



Textured Powder-Coat Textura Monument



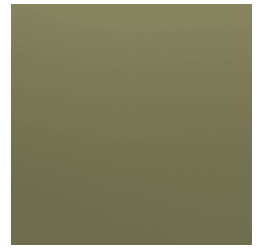
Textured Powder-Coat Textura White



Signature Powder-Coat Deep Ocean Satin



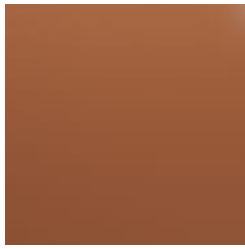
Signature Powder-Coat Wedgewood Satin



Signature Powder-Coat Mangrove Satin



Signature Powder-Coat Territory Red Satin



Signature Powder-Coat Claypot Satin



Signature Powder-Coat Paperbark Satin



Bold Powder-Coat Bondi Blue Gloss



Bold Powder-Coat Leaf Satin



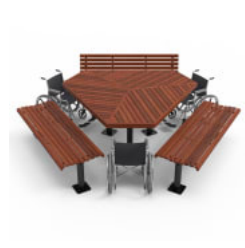
Bold Powder-Coat Sensation Gloss



Bold Powder-Coat Lobster Satin



Bold Powder-Coat Moonlight Satin



URBAN TRI TABLE AS1428.2

Tables » Dining Height Tables

Unique tri table AS1428.2. Irregular hexagon shape. Hardwood, Duraslat™ XG battens with a cast aluminium frame in 27 powder-coat finishes or polished.

● AS1428.2

Description	Referencing Paris's famous wrought ironwork, curved cast aluminium framing is complemented by muscular hardwood or Duraslat™ XG surfaces to offer a timeless and unique Urban tri table AS1428.2. The design is ideal for large groups whilst still catering to wheelchair, prams and high chairs on the flattened 'corners'. This table meets the guidelines of Australian Standards 1428.2 for wheelchair access, and will aid in achieving project DDA compliance. Featuring a unique irregular hexagon shape and striking slatted top design, the table creates a focal gathering point for universities, schools, parks, and public spaces. Pair with benches and seats from the Urban collection to create comfortable and durable park settings. Finishes include 5 hardwood or 5 Duraslat™ XG colours and 27 powder-coat finishes or a polished aluminium finish. Urban is close to our heart; a classic, elegant, and highly functional collection that works in almost any public space.
Made In	Australia
Dimensions	Hardwood O/A 2130mmW x 1830mmD x 868mmH Duraslat™ XG O/A 2120mmW x 1830mmD x 868mmH Edge length: 1500mm Flattened corner length: 630mm
Weight	130kg
Batten Type	Hardwood Blackbutt, Spotted Gum, Mixed Red - Pine, Mahogany, Ebony Oil Duraslat™ XG Ravine, Cave, Alcove, Boulder, Dune Aluminium Alugrain Natural, Driftwood, Spotted Gum
Frame	Cast aluminium in a powder-coat or polished finish Post: powder-coated galvanized steel, colour to match frame specification or silver to coordinate with the polished aluminum finish

URBAN TRI TABLE AS1428.2

Tables » Dining Height Tables

Powder Coat

Core

White (satin), Black (satin), Charcoal (satin), Palladium Silver (satin), Matt Black (matt), Pearl White (gloss)

Solid

Coffee (satin), Cove (satin), Monument (matt), Medium Bronze Kinetic (flat)

Textured

Core Ten (textured metallic), Asteroid (textured metallic), Bass (textured metallic), Textura Black (textured), Textura Monument (textured), Textura White (textured)

Signature

Deep Ocean (satin), Wedgewood (satin), Mangrove (satin), Territory Red (matt), Claypot (satin), Paperbark (satin)

Bold

Bondi Blue (gloss), Leaf (satin), Sensation (gloss), Lobster (satin), Moonlight (satin)

Sustainability

Certified Hardwood

All hardwood is sourced from sustainable forests certified by the Program for the Endorsement of Forest Certification (PEFC), the world's largest forestry certification system.

Recycled Materials

We locally source our aluminium. It means we know it uses recycled content and is 100% recyclable.

Duraslat™ XG is made from 90% of recycled hardwood fibres and reclaimed plastic materials, which reduces demand for virgin materials.

Low Pollutants

Our powder-coating process doesn't emit Volatile Organic Compounds (VOCs) and has Environmental Product Declarations (EPDs).

Warranty

5-year warranty. View the [warranty](#) for more details.

Lead Time

6-8 weeks

Assembly & Delivery

Flat pack assembly. Assembled on site. Some simple assembly is required to attach the legs prior to installation.

Due to the weight of this item (130kg) the top will be delivered on a pallet with the legs separate. A forklift or lifting equipment (by others) is required to take delivery.

URBAN TRI TABLE AS1428.2

Tables » Dining Height Tables

Fixing Detail Post fixed by others - surface, sub-surface or core-holed. Anchors not included.

How to Specify Select your seating types
Select your batten finish
Select your frame finish
Select your fixing type

Care Instructions

Hardwood
Cleaning
Remove any loose surface deposits with a soft bristled brush and wipe down with fresh water and a non-abrasive cloth.

Oiling
Oiling of timber will postpone natural greying, repel moisture, improve mould resistance, help maintain a smooth surface texture and enhance the grain and colour.

To maintain, lightly sand rough areas of timber and brush on one coat of timber decking oil every 6 months or as required.

Powder-Coat
Cleaning
Carefully remove any loose surface deposits with a wet sponge or soft bristled brush.

Use a soft (non-abrasive) cloth or brush and a diluted solution of mild detergent and warm water.

Ensure surfaces are thoroughly rinsed with clean fresh water after cleaning to remove all residues.

Never use thinners, abrasive cleaning agents, alcohol-based, acid or alkali cleaning agents.

URBAN TRI TABLE AS1428.2

Tables » Dining Height Tables

Additional Comments

This table meets the guidelines of Australian Standards 1428.2 for wheelchair accessibility, and with correct installation, will aid in achieving project DDA compliance.

Seating Options

- * Urban Classic Bench
- * Urban Classic Seat
- * Urban Post Bench
- * Urban Post Seat

Pair with 1500mm wide benches or seats. Botton + Gardiner recommends shimming seating to increase seat height with increased table height.

Opt to add Umbrella hole + flange or outdoor power and GPOs to make your settings flexible outdoor working zones ideal for universities and schools.
