

AVENUE PLATFORM SEAT

Seating » Seats

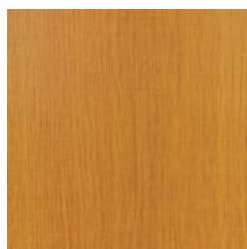


Collection: **Avenue**

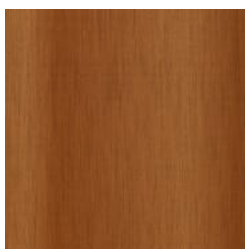
Designed by: **Botton + Gardiner**

AVENUE PLATFORM SEAT

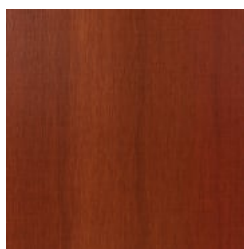
Seating » Seats



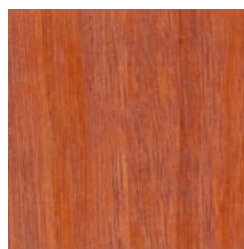
Hardwood Blackbutt
UV-Resistant Oil



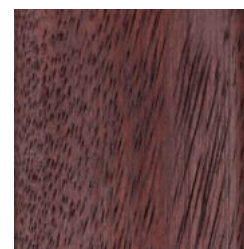
Hardwood Spotted
Gum UV-Resistant
Oil



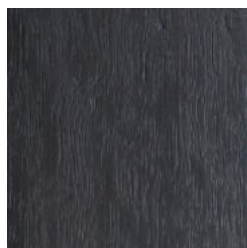
Hardwood Merbau
UV-Resistant Oil



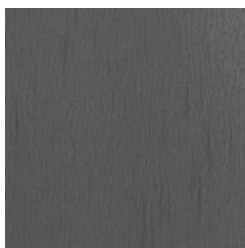
Hardwood Mixed Red
UV-Resistant Oil
Clear



Hardwood Mixed Red
UV-Resistant Oil
Mahogany



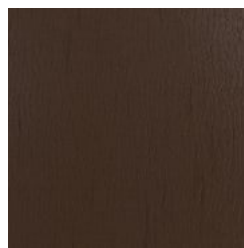
Hardwood Mixed Red
UV-Resistant Oil
Ebony



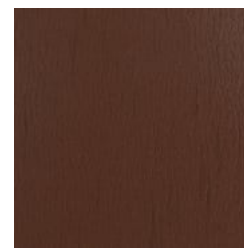
Duraslat™ XG Ravine



Duraslat™ XG Cave



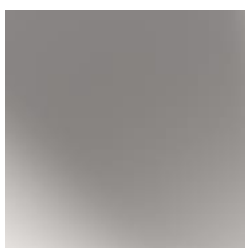
Duraslat™ XG Alcove



Duraslat™ XG
Boulder



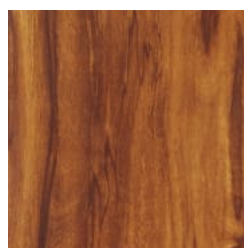
Duraslat™ XG Dune



Clear Anodised
Aluminium



Alugrain Driftwood

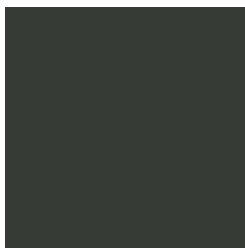


Alugrain Spotted
Gum



Galvanised Steel

Core Powder-Coat
White Satin



Core Powder-Coat
Black Satin



Core Powder-Coat
Charcoal Satin

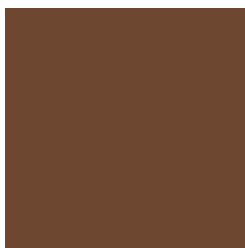


Core Powder-Coat
Palladium Silver Satin



Core Powder-Coat
Matt Black Matt

Core Powder-Coat
Pearl White Gloss



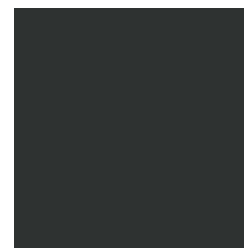
Solid Powder-Coat
Coffee Satin



Solid Powder-Coat
Cove Satin



Solid Powder-Coat
Monument Matt



Textured Powder-
Coat Textura Black

AVENUE PLATFORM SEAT

Seating » Seats



Solid Powder-Coat
Medium Bronze
Kinetic Flat



Textured Powder-Coat
Core Ten
Textured Metallic



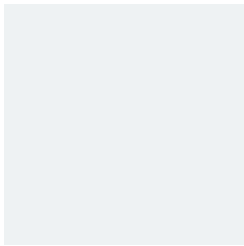
Textured Powder-Coat
Asteroid
Textured Metallic



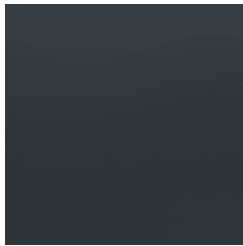
Textured Powder-Coat
Bass Textured
Metallic



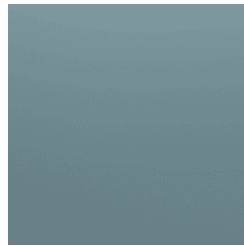
Textured Powder-Coat
Textura
Monument



Textured Powder-Coat
Textura White



Signature Powder-Coat
Deep Ocean
Satin



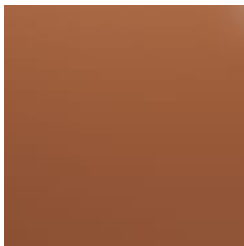
Signature Powder-Coat
Wedgewood
Satin



Signature Powder-Coat
Mangrove Satin



Signature Powder-Coat
Territory Red
Satin



Signature Powder-Coat
Claypot Satin



Signature Powder-Coat
Paperbark Satin



Bold Powder-Coat
Bondi Blue Gloss



Bold Powder-Coat
Leaf Satin



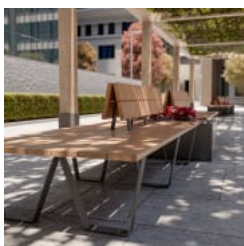
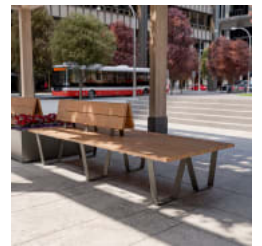
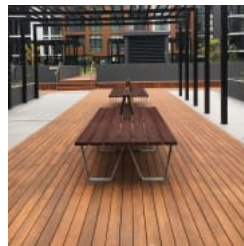
Bold Powder-Coat
Sensation Gloss



Bold Powder-Coat
Lobster Satin



Bold Powder-Coat
Moonlight Satin



AVENUE PLATFORM SEAT

Seating » Seats



AVENUE PLATFORM SEAT

Seating » Seats

Minimalist platform seat design. Battens in hardwood, Duraslat™ XG, aluminium. Tapered steel frame in 27 powder-coat or galvanised finishes.

Description Rectangular battens and a tapered steel frame combine to deliver a minimalist seating design that takes its cues from 20th century industrial design. The functional feel and light appearance of the Avenue platform seat complements and sits within most public spaces. Finishes include 5 hardwood, 5 Duraslat™ XG and 3 aluminium batten colours and 27 powder-coat finishes or a galvanised finish.

Made In Australia

Dimensions

Hardwood
2400mmW x 1010mmD x 820mmH
(Backrest: 1400mmW)

Duraslat™ XG
2200mmW x 1010mmD x 820mmH
(Backrest: 1200mmW)

Aluminium | Alugrain
2600mmW x 1000mmD x 820mmH
(Backrest: 1500mmW)

Seat height: 450mm

Batten Type

Hardwood
Blackbutt, Spotted Gum, Mixed Red - Clear, Mahogany, Ebony Oil

Duraslat™ XG
Ravine, Cave, Alcove, Boulder, Dune

Aluminium | Alugrain
Clear Anodised, Driftwood, Spotted Gum

Frame Powder-coated steel or hot-dip galvanised steel.

Optional 316 stainless steel in matt textured frame finish available on request.

AVENUE PLATFORM SEAT

Seating » Seats

Powder Coat

Core

White (satin), Black (satin), Charcoal (satin), Palladium Silver (satin), Matt Black (matt), Pearl White (gloss)

Solid

Coffee (satin), Cove (satin), Monument (matt), Medium Bronze Kinetic (flat)

Textured

Core Ten (textured metallic), Asteroid (textured metallic), Bass (textured metallic), Textura Black (textured), Textura Monument (textured), Textura White (textured)

Signature

Deep Ocean (satin), Wedgewood (satin), Mangrove (satin), Territory Red (matt), Claypot (satin), Paperbark (satin)

Bold

Bondi Blue (gloss), Leaf (satin), Sensation (gloss), Lobster (satin), Moonlight (satin)

Sustainability

Certified Hardwood

All hardwood is sourced from sustainable forests certified by the Program for the Endorsement of Forest Certification (PEFC), the world's largest forestry certification system.

Recycled Materials

We locally source our steel. It means we know it uses recycled content and is 100% recyclable.

Duraslat™ XG is made from 90% of recycled hardwood fibres and reclaimed plastic materials, which reduces demand for virgin materials.

Low Pollutants

Our powder-coating process doesn't emit Volatile Organic Compounds (VOCs) and has Environmental Product Declarations (EPDs).

Warranty

5-year warranty. View the [warranty](#) for more details.

Lead Time

4-6 weeks

Assembly & Delivery

Shipped fully assembled on pallets.

Fixing Detail

Surface or sub-surface fixed by others. Anchors not included. Shims available for sub-surface fixing on request.

AVENUE PLATFORM SEAT

Seating » Seats

How to Specify

Select your length
Select your batten finish
Select your frame finish
Select your fixing type

AVENUE PLATFORM SEAT

Seating » Seats

Care Instructions

Hardwood

Cleaning

Remove any loose surface deposits with a soft bristled brush and wipe down with fresh water and a non-abrasive cloth.

Oiling

Oiling of timber will postpone natural greying, repel moisture, improve mould resistance, help maintain a smooth surface texture and enhance the grain and colour.

To maintain, lightly sand rough areas of timber and brush on one coat of timber decking oil every 6 months or as required.

Duraslat™ XG

Cleaning

Simply wash down occasionally. Do not use high pressure cleaners.

Powder-Coat

Cleaning

Carefully remove any loose surface deposits with a wet sponge or soft bristled brush.

Use a soft (non-abrasive) cloth or brush and a diluted solution of mild detergent and warm water.

Ensure surfaces are thoroughly rinsed with clean fresh water after cleaning to remove all residues.

Never use thinners, abrasive cleaning agents, alcohol-based, acid or alkali cleaning agents.

Hot-Dip Galvanised Steel

For general cleaning of bulk contaminants such as dirt and the like, ordinary laundry soaps can be satisfactorily used.

For more stubborn or larger areas, the use of a low-pressure wash (eg. a gurney gun) with just pure water or in conjunction with proprietary cleaning materials, such as car wash or truck wash, can be effective. It is important that the steel be washed down with fresh water after cleaning.

The cleaning treatment of the galvanising should be conservative at first and then if the situation demands, the treatment can become steadily more aggressive. Also, wherever some form of mechanical abrasion or “scrubbing” is required, the use of a hard, plastic bristle brush is recommended. Steel bristle brushes are not to be used since they will cause discolouration.

Mechanical methods of cleaning zinc surfaces can cause aesthetic issues. The “cleaned” areas are likely to contrast with adjacent untreated surfaces and may take a significant period of time to weather to a uniform colour. If aesthetics is a large concern, it is advisable to first test the cleaning method in an inconspicuous area in case the aesthetic effect is unappealing.

AVENUE PLATFORM SEAT

Seating » Seats

Customisable As this item is made to order locally, custom lengths are available on request.

Additional Comments Hardwood is treated with a UV-resistant oil finish.
